

Herban Sprawl

A Free Project Sheet
NOT FOR RESALE

Quilt 1

Quilt Design by Heidi Pridemore



Skill Level: Advanced Beginner



facebook

Finished Quilt Size: 52" x 44"
49 West 37th Street, 14th floor, New York, NY 10018
Toll Free: 800-294-9495
fax: 212-679-4578
www.blankquilting.net

Please check our website for pattern updates before starting this project.

HERBAN SPRAWL

Quilt 1

Finished Quilt Size: 52" x 44"

Fabrics in the Herban Sprawl Collection



Cannabis Panel - Green
1022P-66



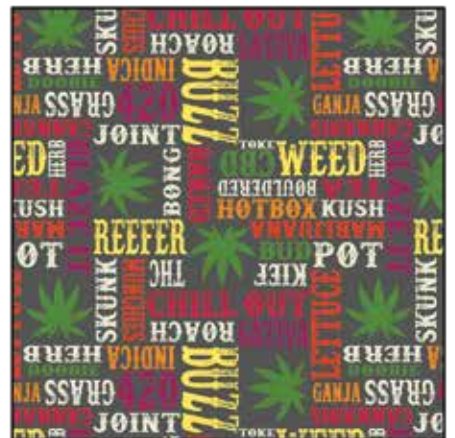
Cannabis Leaf Allover - Green
1023-66



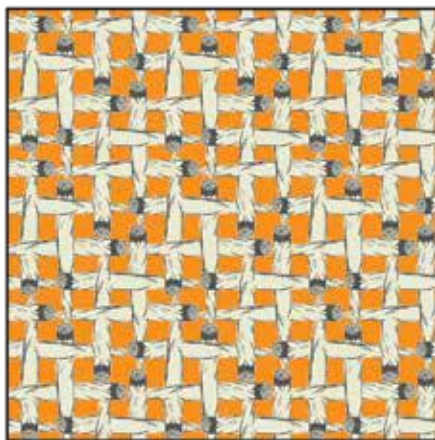
Cannabis Jars - Green
1024-66



Gummy Bears - White
1025-01



Words - Gray
1026-95



Marijuana Joints - Orange
1027-33

Select Fabric from the
Urban Legend Collection



Charcoal
7101-99

Materials

1 panel	Cannabis Panel - Green (A)	1022P-66
¾ yard	Urban Legend - Charcoal (B)	7101-99*
⅞ yard	Cannabis Leaf Allover - Green (C)	1023-66
⅜ yard	Gummy Bears - White (D)	1025-01
½ yard	Cannabis Jars - Green (E)	1024-66
⅜ yard	Marijuana Joints - Orange (F)	1027-33
¼ yard	Words - Gray (G)	1026-95
3 yards	Cannabis Leaf Allover - Green (Backing)	1023-66

*Includes binding

Cutting Instructions

Please note: All strips are cut across the width of fabric (WOF) from selvage to selvage unless otherwise noted.

From the Cannabis Panel - Green (A):

- Fussy cut (1) 42 ½" x 34 ½" strip centered on the panel.

From the Urban Legend - Charcoal (B), cut:

- (5) 2 ½" x WOF strips for the binding.
- (2) 2" x 34 ½" WOF strips.
- (3) 2" x WOF strips. Sew the strips together end to end with diagonal seams and cut (2) 2" x 45 ½" strips.

From the Cannabis Leaf Allover - Green (C), cut:

- (10) 2 ½" x WOF strips. Sub-cut (160) 2 ½" squares.

From the Gummy Bears - White (D), cut:

- (2) 4 ½" x WOF strips. Sub-cut (10) 4 ½" squares.

From the Cannabis Jars - Green (E), cut:

- (3) 4 ½" x WOF strips. Sub-cut (20) 4 ½" squares.

From the Marijuana Joints - Orange (F), cut:

- (2) 4 ½" x WOF strips. Sub-cut (10) 4 ½" squares.

From the Words - Gray (G), cut:

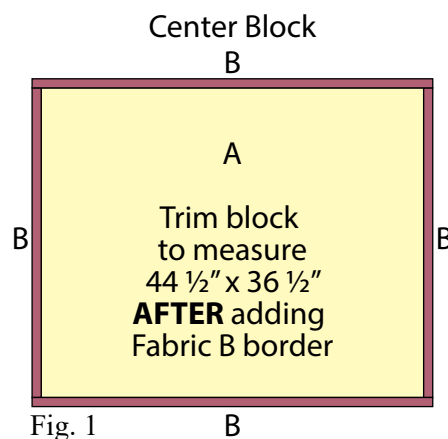
- (1) 4 ½" x WOF strip. Sub-cut (4) 4 ½" squares.

From the Cannabis Leaves Allover - Green (Backing), cut:

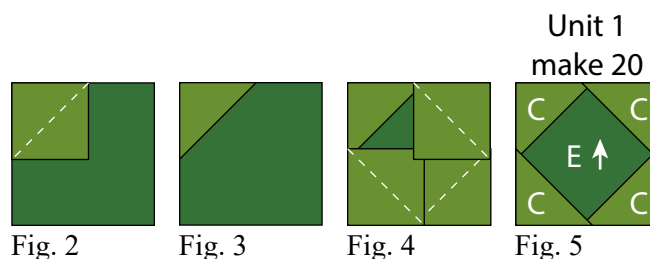
- (2) 52" x WOF strips for the backing. Sew the strips together and trim to make the 52" x 60" back.

Block Assembly

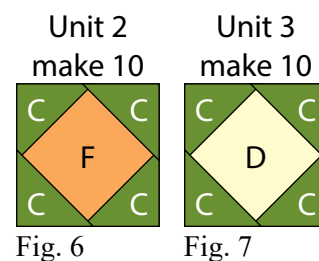
1. Sew (1) 2" x 34 ½" Fabric B strip to each side of the 42 ½" x 34 ½" Fabric A panel. Sew (1) 2" x 45 ½" Fabric B strip to the top and to the bottom of the Fabric A panel. Trim the block to measure 44 ½" x 36 ½" to make the Center Block (Fig. 1).



2. Place (1) 2 ½" Fabric C square on the top left corner of (1) 4 ½" Fabric E square, right sides together (Fig. 2). Sew across the diagonal of the smaller square from the upper right corner to the lower left corner (Fig. 2). Flip open the triangle formed and press (Fig. 3). Trim away the excess fabric from behind the triangle ¼" away from the sewn seam.
3. Follow Figure 4 for the seam direction to add a 2 ½" Fabric C square to each of the remaining corners of the 4 ½" Fabric E square to make (1) Unit 1 square (Fig. 5).
4. Repeat Steps 2-3 to make (20) Unit 1 squares total.



5. Repeat Steps 2-3 and refer to Figures 6-7 for fabric identification, placement and orientation to make (10) Unit 2 squares and (10) Unit 3 squares.



6. Refer to Figure 8 and sew (5) Unit 1 squares, (2) Unit 2 squares and (2) Unit 3 squares together to make the Left Side Border.

7. Refer to Figure 9 and sew (5) Unit 1 squares, (2) Unit 3 squares and (2) Unit 2 squares together to make the Right Side Border.

Left Side
Border



Fig. 8

Right Side
Border



Fig. 9

8. Refer to Figure 10 to sew together (3) Unit 3 blocks, (5) Unit 1 blocks and (3) Unit 2 blocks. Sew (1) 4 1/2" Fabric G square to each end of the newly sewn strip to make the Top Border.

9. Repeat Step 8 and refer to Figure 11 for component identification, placement and orientation to make the Bottom Border.

Quilt Top Assembly

(Follow the Quilt Layout while assembling the quilt top.)

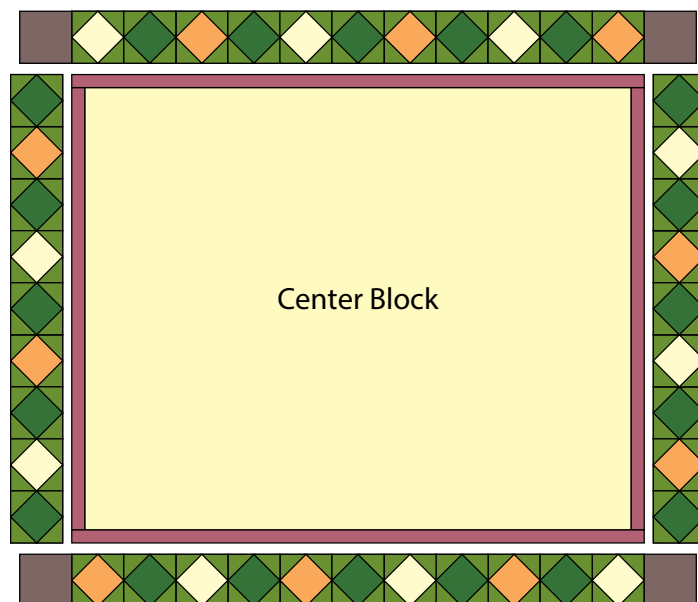
10. Sew the Left Side Border and Right Side Border to the left and to the right side of the Center Block.

11. Sew the Top Border and Bottom Border to the top and to the bottom of the Center Block to make the quilt top.

12. Layer and quilt as desired.

13. Sew the (5) 2 1/2" x WOF Fabric B strips together, end to end with 45-degree seams, to make the binding. Fold this long strip in half lengthwise with wrong sides together and press.

14. Bind as desired.



Quilt Layout

Top Border

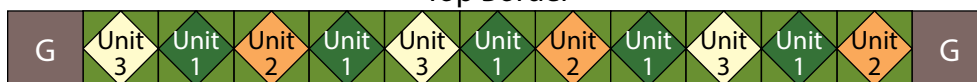


Fig. 10

Bottom Border

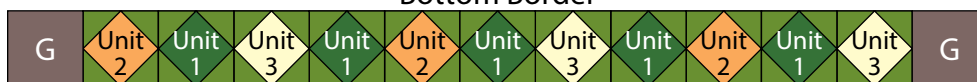


Fig. 11

Every effort has been made to ensure that all projects are error free. All the information is presented in good faith, however no warranty can be given nor results guaranteed as we have no control over the execution of instructions. Therefore, we assume no responsibility for the use of this information or damages that may occur as a result. When errors are brought to our attention, we make every effort to correct and post a revision as soon as possible. Please make sure to check www.blankquilting.net for pattern updates prior to starting the project. We also recommend that you test the project prior to cutting for kits. Finally, all free projects are intended to remain free to you and are **not for resale**.