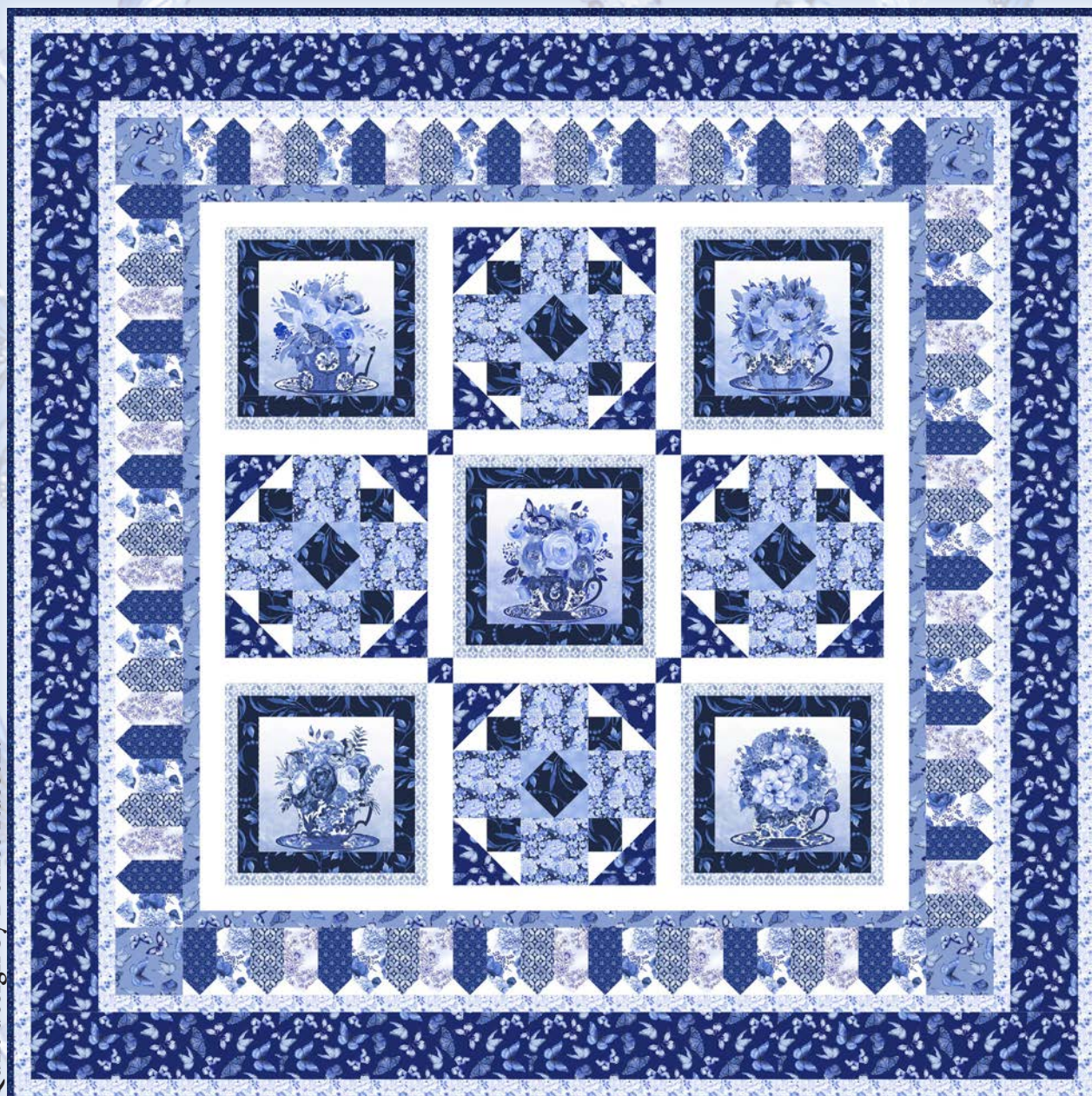




Quilt 1

Blue Jubilee



Quilt design by Denise Russell.

Quilt size: 65" x 65"

Skill Level: Confident Beginner.

Blank Quilting Corporation
49 West 37th Street ♦ New York, NY 10018
Tel: 800-294-9495 ♦ Fax: 212-679-4578
www.blankquilting.net

facebook

Free Project
NOT FOR RESALE

Blue Jubilee - Fabrics in the Collection



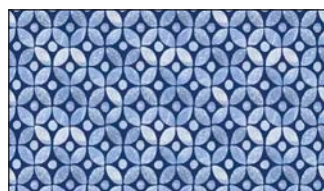
1720-75 Blocks with Teacups and Flowers
Med. Blue



1719-75 Large Daisy with Swirl
Med. Blue



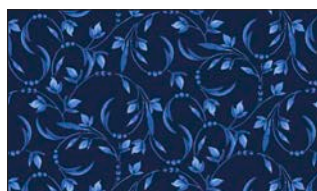
1721-70 Geometric
Lt. Blue



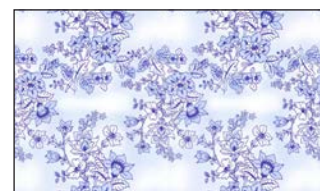
1721-75 Geometric
Med. Blue



1722-01 Swirl
White



1722-77 Swirl
Dk. Blue



1723-70 Floral Toile
Lt. Blue



1724-77 Floral on Striped
Background - Dk. Blue



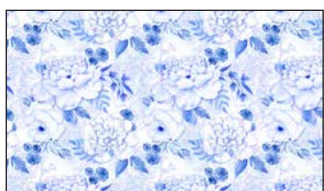
1725-01 Butterflies
White



1725-75 Butterflies
Med. Blue



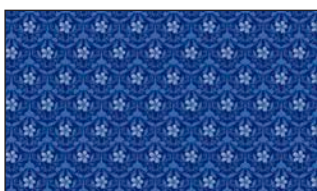
1725-77 Butterflies
Dk. Blue



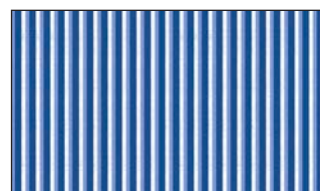
1726-70 Cabbage Rose
Lt. Blue



1726-75 Cabbage Rose
Med. Blue



1727-77 Mini Floral
Dk. Blue



1728-75 Stripe
Med. Blue



1729-01 Tossed Teacups
with Flowers - White

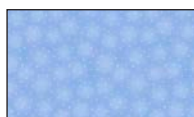


1730-75 Paisley
Med. Blue



1731-75 Roses
Med. Blue

Selected fabrics from the Starlet collection

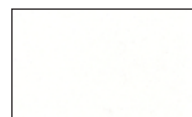


6383 Sky



6383 Navy

Selected fabric from the Eclipse collection



3955 White

Materials

Yardages and cutting instructions are based on 42" of usable fabric width.

1/8 yard 6383 Starlet - Sky
 1/3 yard 1721-75 Geometric - Med. Blue
 1/3 yard 1723-70 Floral Toile - Lt. Blue
 1/3 yard 1726-75 Cabbage Rose - Med. Blue
 1/3 yard 1727-77 Mini Floral - Dk. Blue
 1/3 yard 1731-75 Roses - Med. Blue
 1/2 yard 1721-70 Geometric - Lt. Blue
 1/2 yard 1725-75 Butterflies - Med. Blue
 5/8 yard 6383 Starlet - Navy
 5/8 yard 1722-77 Swirl - Dk. Blue
 2/3 yard 1720-75 Blocks with Teacups and Flowers - Med. Blue
 2/3 yard 1726-70 Cabbage Rose - Lt. Blue
 1-1/8 yards 3955 Eclipse - White
 1-1/8 yards 1725-77 Butterflies - Dk. Blue
 4-1/8 yards 1725-01 Butterflies - White for backing
 73" x 73" piece of Air Lite® Colour Me 100% Cotton batting

Cut Fabrics

Note: *All strips are cut across the width of the fabric (WOF) from selvage to selvage unless otherwise indicated.*

From 6383 Starlet – Sky, cut:

*One 2-1/2" x WOF strip. Sub-cut sixteen 2-1/2" squares.

From each, cut:

1723-70 Floral Toile - Lt. Blue
 1721-75 Geometric - Med. Blue
 *Three 2-1/2" x WOF strips. Sub-cut twenty-one 2-1/2" x 4-1/2" rectangles.

From 1726-75 Cabbage Rose - Med. Blue, cut:

*Two 4-1/2" x WOF strips. Sub-cut sixteen 4-1/2" squares.

From each, cut:

1727-77 Mini Floral - Dk. Blue
 1731-75 Roses - Med. Blue
 *Three 2-1/2" x WOF strips. Sub-cut twenty-three 2-1/2" x 4-1/2" rectangles.

From 1721-70 Geometric - Lt. Blue, cut:

*One 12-1/2" x WOF strip. Sub-cut ten 1-1/4" x 12-1/2" strips and ten 1-1/4" x 11" strips.

From 1725-75 Butterflies - Med. Blue, cut:

*One 4-1/2" x WOF strip. Sub-cut four 4-1/2" squares.
 *Five 1-1/2" x WOF strips for border 2.

From 6383 Starlet – Navy, cut:

*Seven 2-1/2" x WOF strips for binding.

From 1722-77 Swirl - Dk. Blue, cut:

*One 2-1/2" x WOF strip. Sub-cut sixteen 2-1/2" squares.
 *One 4-1/2" x WOF strip. Sub-cut four 4-1/2" squares.
 *One 11" x WOF strip. Sub-cut ten 1-3/4" x 11" strips and ten 1-3/4" x 8-1/2" strips.

From 1720-75 Blocks with Teacups and Flowers - Med. Blue, trim:

*Trim five 8-1/2" squares.

From 1726-70 Cabbage Rose - Lt. Blue, cut:

*Thirteen 1-1/2" x WOF strips: six for border 4, seven for border 6.

From 3955 Eclipse – White, cut:

*Seven 1-1/2" x WOF strips. Sub-cut 176 1-1/2" squares.
 *Two 2-7/8" x WOF strips. Sub-cut sixteen 2-7/8" squares; cut diagonally once. (A)
 *Four 2" x WOF strips. Sub-cut twelve 2" x 12-1/2" sashing strips.
 *Five 2-1/2" x WOF strips for border 1.

From 1725-77 Butterflies - Dk. Blue, cut:

*One 2" x WOF strip. Sub-cut four 2" squares for cornerstones.
 *One 4-7/8" x WOF strip. Sub-cut eight 4-7/8" squares; cut diagonally once. (B)
 *Six 4-1/2" x WOF strips for border 5.

Assemble Blocks

Measurements include $\frac{1}{4}$ " seam allowances. Sew with right sides together unless otherwise stated. If no direction is specified, press the seam toward the darker fabric.

1. Sew one $1\frac{3}{4}$ " x $8\frac{1}{2}$ " 1722-77 Swirl - Dk. Blue strip to opposite sides of the $8\frac{1}{2}$ " 1720-75 Blocks with Teacups and Flowers - Med. Blue squares. Press the seams away from the center. Sew one $1\frac{3}{4}$ " x 11" Dk. Blue strip to the top and one to the bottom of each square.

Repeat this step with the $1\frac{1}{4}$ " x 11" 1721-70 Geometric - Lt. Blue strips (for the sides) and the $1\frac{1}{4}$ " x $12\frac{1}{2}$ " Lt. Blue strip (for top and bottom). The blocks measure $12\frac{1}{2}$ " (figure 1).

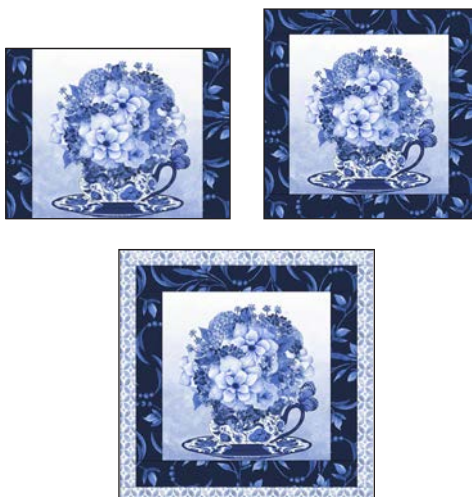


Figure 1 – Make (5) $12\frac{1}{2}$ " blocks.

2. Sew one 3955 Eclipse – White triangle A to one side of a $2\frac{1}{2}$ " 1722-77 Swirl - Dk. Blue square. Press open. Sew another triangle A to the adjacent side of the same square. Press open. Sew a 1725-77 Butterflies - Dk. Blue triangle B to this unit and press the seam toward the triangle B. Repeat to make sixteen $4\frac{1}{2}$ " units (figure 2).

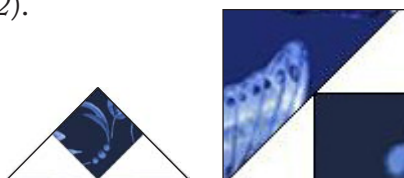


Figure 2 – Make (16) $4\frac{1}{2}$ " units.

3. Sew one $4\frac{1}{2}$ " 1726-75 Cabbage Rose - Med. Blue square in between two Step 2 units (figure 3). Press the seams to the center. Repeat to make eight strips.

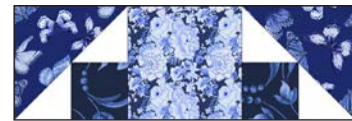


Figure 3 – Make (8).

4. Draw a diagonal line on the wrong side of the $2\frac{1}{2}$ " 6383 Starlet - Sky squares. With right sides together, place one marked Sky square on a corner of one $4\frac{1}{2}$ " 1722-77 Swirl - Dk. Blue square and stitch on the drawn line. Repeat with the opposite corner of the same square. Trim seam allowances to $\frac{1}{4}$ " and press open. Repeat with the other corners of the square (figure 4). Make four $4\frac{1}{2}$ " patches.



Figure 4 – Make (4).

5. Sew a Step 4 unit in between two $4\frac{1}{2}$ " 1726-75 Cabbage Rose - Med. Blue squares. Press the seams away from the center. Repeat to make four center strips. Noting fabric orientation, sew a Step 3 strip to the top and one to the bottom of the center strips to make four $12\frac{1}{2}$ " blocks (figure 5). Press the seams in one direction.

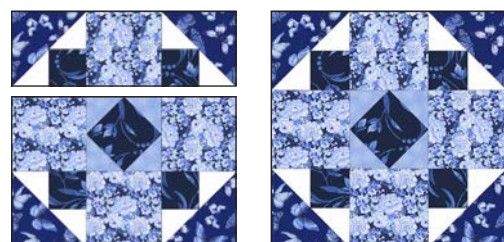


Figure 5 – Make (4) $12\frac{1}{2}$ " blocks.

6. Mark the $1\frac{1}{2}$ " 3955 Eclipse – White squares as in Step 4. With right sides together, place one marked White square on a corner of one $2\frac{1}{2}$ " x $4\frac{1}{2}$ " 1727-77 Mini Floral - Dk. Blue rectangle and stitch on the drawn line. Trim seam allowance to $\frac{1}{4}$ " and press

open. Repeat with the adjacent corner. Do the same with the remaining Mini Floral and the 1731-75 Roses - Med. Blue rectangles, as well as the 2-1/2" x 4-1/2" 1723-70 Floral Toile - Lt. Blue and 1721-75 Geometric - Med. Blue rectangles.

Sew the units together two by two to make twenty-three 4-1/2" Mini Floral and Roses blocks and twenty-one 4-1/2" Floral Toile and Geometric blocks (*figure 6*). Press the seams open.

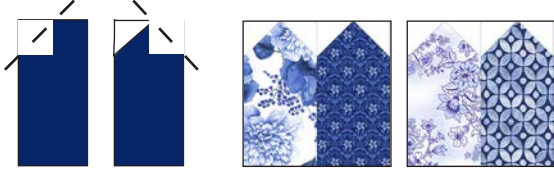


Figure 6 – Make (23) and (21), respectively.

Assemble Quilt Top

7. Referring to the quilt photo for block placement, lay out the blocks and the 2" x 12-1/2" 3955 Eclipse – White sashing strips in three rows, and join the blocks and sashing strips together in each row. Press the seams toward the sashing.

8. To make the horizontal sashing rows, sew together three 3955 Eclipse – White sashing strips and two 2" 1725-77 Butterflies - Dk. Blue cornerstone squares. Repeat to make another strip. Press the seams toward the sashing.

9. Matching adjacent seams, sew block rows and horizontal sashing strips together. Press the seams in one direction.

10. For border 1, join the five 2" 3955 Eclipse – White border strips together end to end using diagonal seams. Measure the vertical length of the quilt top through the center and cut two border strips that length. Sew one strip to each side of the quilt top. Measure the width of the quilt top through the center. Cut two border strips that length and sew one to the top and one to the bottom. Press the seams toward the borders.

11. Repeat Step 10 with the five 1-1/2" 1725-75 Butterflies - Med. Blue to make and add border 2. The quilt measures 44-1/2" x 44-1/2" up to here.

12. For border 3 and referring to the quilt photo for block placement, arrange eleven Step 6 blocks for each side of the quilt. Sew blocks together and sew one border strip to each side of the quilt center. Press the seam toward the quilt center.

13. Repeat Step 12 with the four 4-1/2" 1725-75 Butterflies - Med. Blue corner squares and the remaining Step 6 blocks and sew one border strip to the top and one to the bottom of the quilt center.

14. Repeat Step 10 with the six 1-1/2" 1726-70 Cabbage Rose - Lt. Blue strips to make and add border 4.

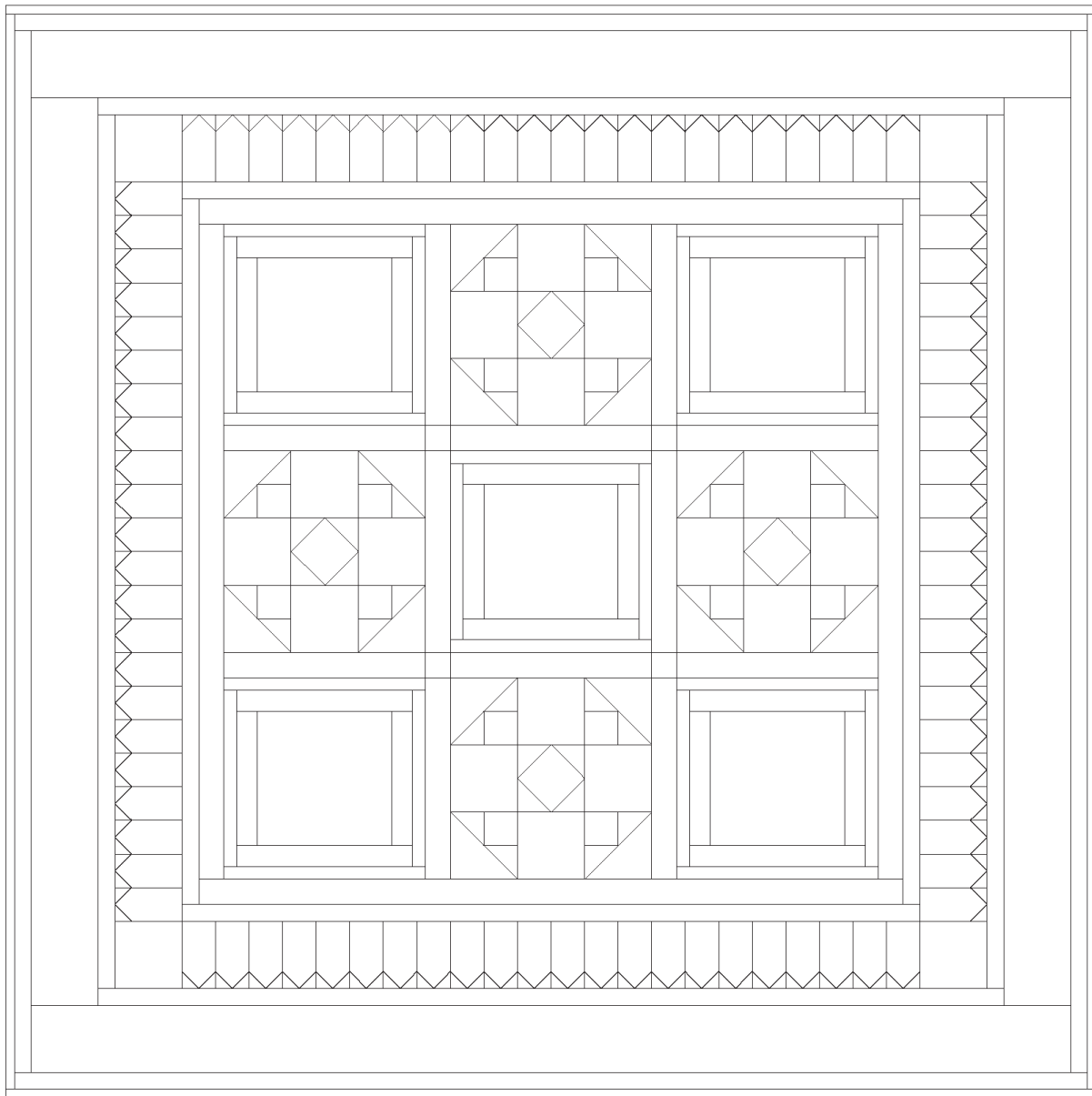
15. Repeat Step 10 with the six 4-1/2" 1725-75 Butterflies - Med. Blue strips to make and add border 5.

16. Repeat Step 10 with the seven 1-1/2" 1726-70 Cabbage Rose - Lt. Blue strips to make and add border 6.

Finishing

17. Create a quilt sandwich with the batting between the quilt top and the backing. Pin or baste layers together, mark quilting design, and quilt by hand or machine. When quilting is complete, remove pins or basting, and trim batting and backing even with raw edges of the quilt top.

18. Join the seven 2-1/2" 6383 Starlet – Navy binding strips together end to end using a diagonal seam to make one long strip. Fold in half lengthwise and press. Sew binding to the edges of the quilt, mitering corners, and overlapping ends. Fold binding to the back of the quilt and stitch it in place by hand to finish.



©2021 Blank Quilting Corporation

Every effort has been made to ensure that all projects are error free. All the information is presented in good faith; however, no warranty can be given nor results guaranteed as we have no control over the execution of instructions. Therefore, we assume no responsibility for the use of this information or damages that may occur as a result. When errors are brought to our attention, we make every effort to correct and post a revision as soon as possible. Please make sure to check www.blankquilting.net for pattern updates prior to starting the project. We also recommend that you test the project prior to cutting for kits. Finally, all free projects are intended to remain free to you and are not for resale.