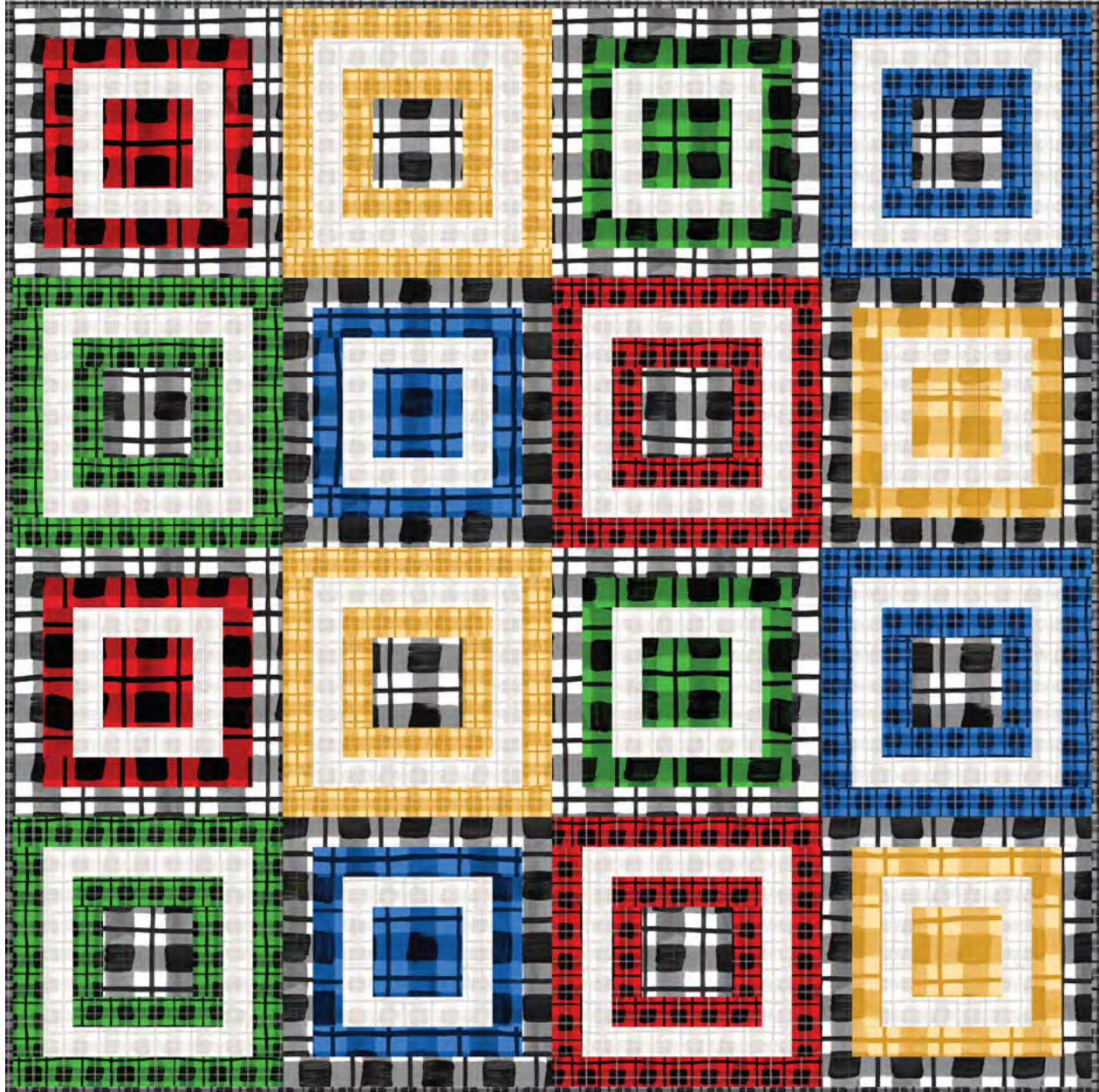


Plaid Cabin Quilt



Finished Quilt Size: 72" x 72" (1.83m x 1.83m)

Finished Block Size: 18" x 18" (45.72cm x 45.72cm)

Fabric Collection: **Overplaid by Julie Wurzer of Patchabilities**

Technique: **Pieced**

Designed by: **Lisa Swenson Ruble**

Skill Level: **Advanced Beginner**

Tech Edited by: **Quilt Pattern Writers**

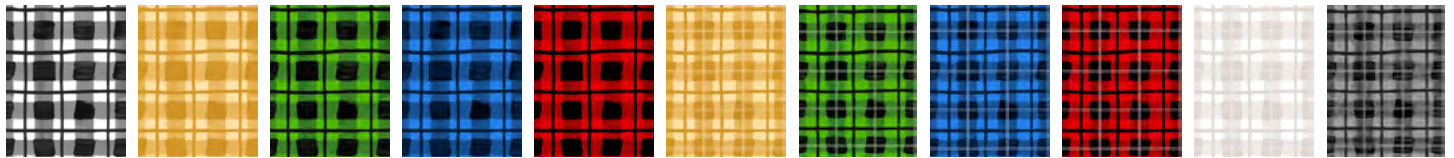
Plaid Cabin Quilt



Fabric Requirements

DESIGN	COLOR	ITEM ID	YARDAGE
(A) Large Plaid	Black/White	3821-01	1 $\frac{5}{8}$ yards (1.49m)
(B) Large Plaid	Gold	3821-44	$\frac{1}{2}$ yard (0.46m)
(C) Large Plaid	Green/Black	3821-66	$\frac{1}{2}$ yard (0.46m)
(D) Large Plaid	Blue/Black	3821-77	$\frac{1}{2}$ yard (0.46m)
(E) Large Plaid	Red/Black	3821-88	$\frac{1}{2}$ yard (0.46m)
(F) Small Plaid	Gold	3822-44	$\frac{1}{2}$ yard (0.46m)
(G) Small Plaid	Green/Black	3822-66	$\frac{1}{2}$ yard (0.46m)
(H) Small Plaid	Blue/Black	3822-77	$\frac{1}{2}$ yard (0.46m)
(I) Small Plaid	Red/Black	3822-88	$\frac{1}{2}$ yard (0.46m)
(J) Small Plaid	Lt. Gray	3822-90	1 $\frac{1}{4}$ yards (1.14m)
(K) Small Plaid	Charcoal/Black	3822-95*	$\frac{5}{8}$ yard (0.57m)

* includes binding



(A) (B) (C) (D) (E) (F) (G) (H) (I) (J) (K)

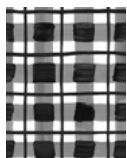
Backing (Purchased Separately)

44" (1.12m) wide

Large Plaid Black/White 3821-01 4 $\frac{1}{2}$ yards (4.11m)

OR

108" (2.74m) wide 2 $\frac{1}{4}$ yards (2.06m)



Backing
44"

Additional Materials:

- 100% cotton thread in colors to match
- 80" x 80" (2.03m x 2.03m) batting

All possible care has been taken to ensure the accuracy of this pattern. We are not responsible for printing errors or the manner in which individual work varies.

Please read the instructions carefully before starting this project. If kitting it is recommended a sample is made to confirm accuracy.

All free projects are intended to remain free and are not for resale.

Plaid Cabin Quilt



Cutting Instructions

Notes:

- Please make sure to check blankquilting.net for pattern updates prior to starting the project.
- All strips are cut across the width of fabric (WOF) from selvage to selvage edge unless otherwise noted.

Fabric A, cut:

- (2) 6½" x WOF; sub-cut
- (8) 6½" squares
- (16) 2½" x WOF; sub-cut
- (16) 2½" x 18½" rectangles
- (16) 2½" x 14" rectangles

Fabric B, cut:

- (1) 6½" x WOF; sub-cut
- (2) 6½" squares
- (3) 2½" x WOF; sub-cut
- (4) 2½" x 14½" rectangles
- (4) 2½" x 10½" rectangles

Fabric C, cut:

- (1) 6½" x WOF; sub-cut
- (2) 6½" squares
- (3) 2½" x WOF; sub-cut
- (4) 2½" x 14½" rectangles
- (4) 2½" x 10½" rectangles

Fabric D, cut:

- (1) 6½" x WOF; sub-cut
- (2) 6½" squares
- (3) 2½" x WOF; sub-cut
- (4) 2½" x 14½" rectangles
- (4) 2½" x 10½" rectangles

Fabric E, cut:

- (1) 6½" x WOF; sub-cut
- (2) 6½" squares
- (3) 2½" x WOF; sub-cut
- (4) 2½" x 14" rectangles
- (4) 2½" x 10½" rectangles

Fabric F, cut:

- (6) 2½" x WOF; sub-cut
- (4) 2½" x 18½" rectangles
- (4) 2½" x 14½" rectangles
- (4) 2½" x 10½" rectangles
- (4) 2½" x 6½" rectangles

Fabric G, cut:

- (6) 2½" x WOF; sub-cut
- (4) 2½" x 18½" rectangles
- (4) 2½" x 14½" rectangles
- (4) 2½" x 10½" rectangles
- (4) 2½" x 6½" rectangles

Fabric H, cut:

- (6) 2½" x WOF; sub-cut
- (4) 2½" x 18½" rectangles
- (4) 2½" x 14½" rectangles
- (4) 2½" x 10½" rectangles
- (4) 2½" x 6½" rectangles

Fabric I, cut:

- (6) 2½" x WOF; sub-cut
- (4) 2½" x 18½" rectangles
- (4) 2½" x 14½" rectangles
- (4) 2½" x 10½" rectangles
- (4) 2½" x 6½" rectangles

Fabric J, cut:

- (13) 2½" x WOF; sub-cut
- (16) 2½" x 14½" rectangles
- (32) 2½" x 10½" rectangles
- (16) 2½" x 6½" rectangles

Fabric K, cut:

- (8) 2½" x WOF for the binding

All possible care has been taken to ensure the accuracy of this pattern. We are not responsible for printing errors or the manner in which individual work varies.

Please read the instructions carefully before starting this project. If kitting it is recommended a sample is made to confirm accuracy.

All free projects are intended to remain free and are not for resale.

Plaid Cabin Quilt

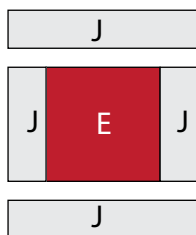


Sewing

All seam allowances are $\frac{1}{4}$ ". Sew pieces right sides together. Press seam allowances open unless otherwise indicated.

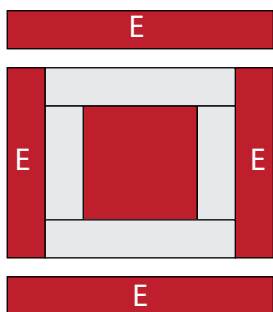
1. Sew **Fabric J** $2\frac{1}{2}$ " x $6\frac{1}{2}$ " rectangles to opposite sides of (1) **Fabric E** $6\frac{1}{2}$ " square. Sew **Fabric J** $2\frac{1}{2}$ " x $10\frac{1}{2}$ " rectangles to the top and bottom (**Fig. 1**). Make (2) total E-J units.

Fig. 1



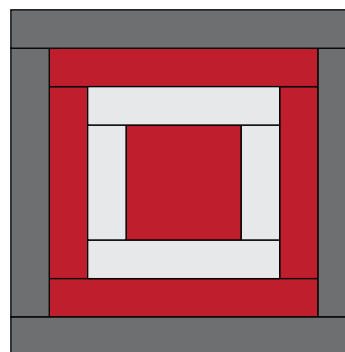
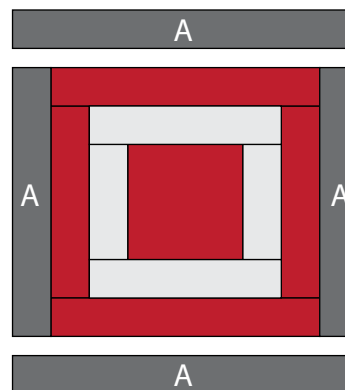
2. Sew **Fabric E** $2\frac{1}{2}$ " x $10\frac{1}{2}$ " rectangles to opposite sides of (1) E-J unit. Sew **Fabric E** $2\frac{1}{2}$ " x $14\frac{1}{2}$ " rectangles to the top and bottom (**Fig. 2**). Make (2) total E-J-E units.

Fig. 2



3. Sew **Fabric A** $2\frac{1}{2}$ " x $14\frac{1}{2}$ " rectangles to opposite sides of (1) E-J-E unit. Sew **Fabric A** $2\frac{1}{2}$ " x $18\frac{1}{2}$ " rectangles to the top and bottom to complete Block One, measuring $18\frac{1}{2}$ " square (**Fig. 3**). Make (2) total Block One.

Fig. 3



Block One

All possible care has been taken to ensure the accuracy of this pattern. We are not responsible for printing errors or the manner in which individual work varies.

Please read the instructions carefully before starting this project. If kitting it is recommended a sample is made to confirm accuracy.

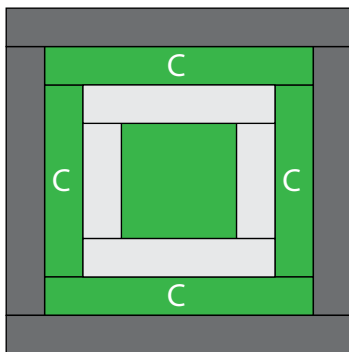
All free projects are intended to remain free and are not for resale.

Plaid Cabin Quilt

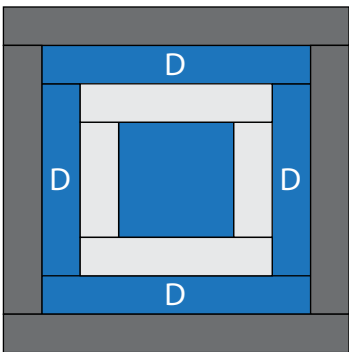


4. In the same way, make (2) each Block Two using **Fabric C** rectangles, Block Three using **Fabric D** rectangles, and Block Four using **Fabric B** rectangles (**Fig. 4**).
5. Sew **Fabric F** $2\frac{1}{2}$ " x $6\frac{1}{2}$ " rectangles to opposite sides of (1) **Fabric A** $6\frac{1}{2}$ " square. Sew **Fabric F** $2\frac{1}{2}$ " x $10\frac{1}{2}$ " rectangles to the top and bottom (**Fig. 5**). Make (2) total A-F units.

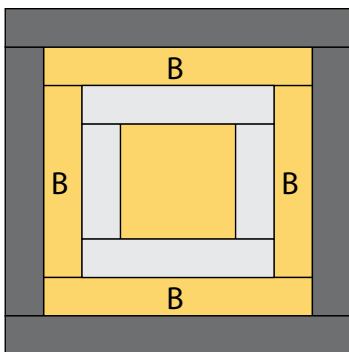
Fig. 4



Block Two

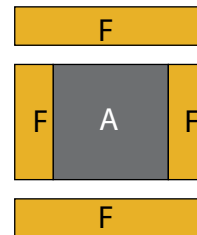


Block Three



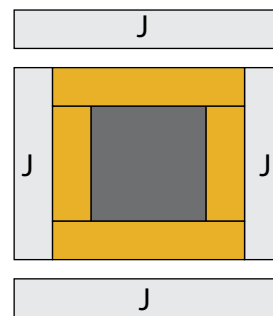
Block Four

Fig. 5



6. Sew **Fabric J** $2\frac{1}{2}$ " x $10\frac{1}{2}$ " rectangles to opposite sides of (1) A-F unit. Sew **Fabric J** $2\frac{1}{2}$ " x $14\frac{1}{2}$ " rectangles to the top and bottom (**Fig. 6**). Make (2) total A-F-J units.

Fig. 6



All possible care has been taken to ensure the accuracy of this pattern. We are not responsible for printing errors or the manner in which individual work varies.

Please read the instructions carefully before starting this project. If kitting it is recommended a sample is made to confirm accuracy.

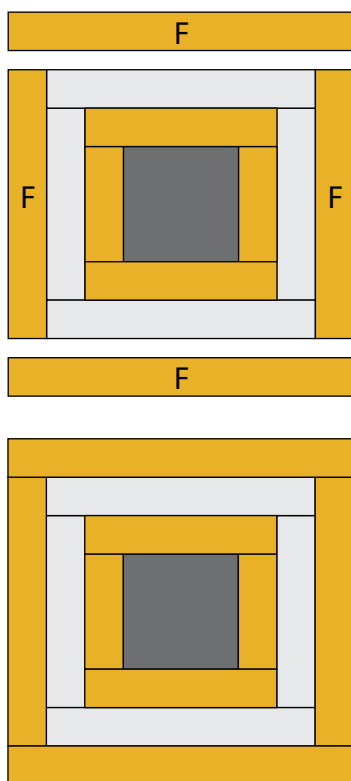
All free projects are intended to remain free and are not for resale.

Plaid Cabin Quilt



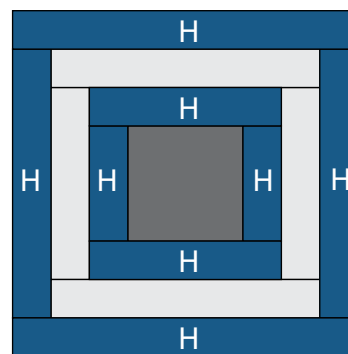
7. Sew **Fabric F** 2½" x 14½" rectangles to opposite sides of (1) A-F-J unit. Sew **Fabric F** 2½" x 18½" rectangles to the top and bottom to complete Block Five, measuring 18½" square (**Fig. 7**). Make (2) total Block Five.
8. In the same way, make (2) each Block Six using **Fabric H** rectangles, Block Seven using **Fabric G** rectangles, and Block Eight using **Fabric I** rectangles (**Fig. 8**).

Fig. 7

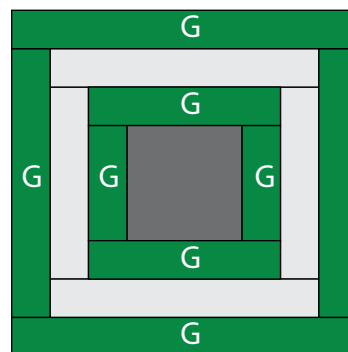


Block Five

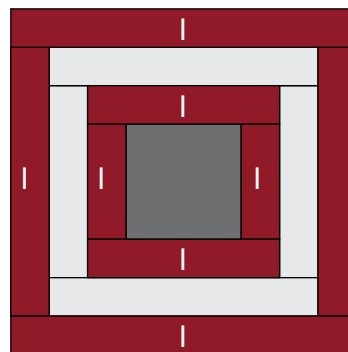
Fig. 8



Block Six



Block Seven



Block Eight

All possible care has been taken to ensure the accuracy of this pattern. We are not responsible for printing errors or the manner in which individual work varies.

Please read the instructions carefully before starting this project. If kitting it is recommended a sample is made to confirm accuracy.

All free projects are intended to remain free and are not for resale.

Plaid Cabin Quilt



Quilt Top Assembly

Follow the Quilt Layout (page 8) while assembling the quilt top.

9. Sew together (1) each Block One, Block Five, Block Two, and Block Six into a row. Make (2) total Row One. Sew together (1) each Block Seven, Block Three, Block Eight, and Block Four into a row. Make (2) total Row Two.
10. Sew Row One and Two together in alternating order to make the quilt top.

Finishing

11. Sew together the (8) 2½" x WOF **Fabric K** binding strips end to end using diagonal seams. Press the seams open. Press the binding strip in half wrong sides together.
12. Layer the backing (wrong side up), batting, and quilt top (right side up). Baste the layers together and quilt as desired. Trim excess batting and backing even with the top of the quilt.
13. Leaving an 8" tail of binding and beginning along an edge of the quilt top, match raw edges of the binding to the raw edges of the quilt top. Sew the binding to the outside edge around all four sides and miter corners. Stop sewing approximately 12" from where you started and backstitch.
14. Lay both loose ends of binding flat along the quilt edge. Where these two loose ends meet, fold them back onto themselves and press to form a crease. Using this crease as your stitching line, sew the two open ends of the binding together, right sides matching. Trim seam to ¼" and press seam open. Finish sewing the binding to the quilt top.
15. Turn the binding over the raw edge to the back of the quilt and hand or machine stitch in place.

All possible care has been taken to ensure the accuracy of this pattern. We are not responsible for printing errors or the manner in which individual work varies.

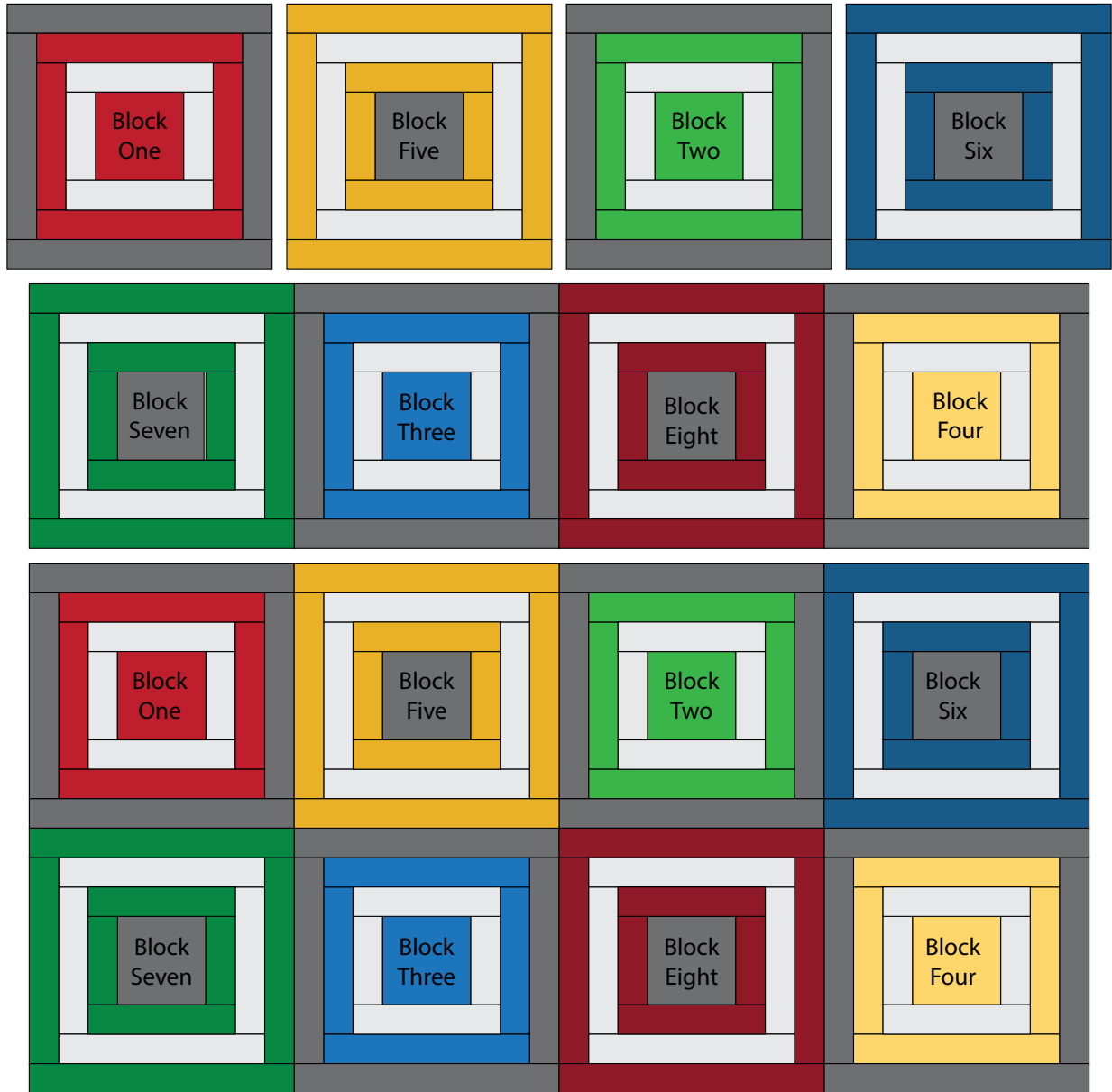
Please read the instructions carefully before starting this project. If kitting it is recommended a sample is made to confirm accuracy.

All free projects are intended to remain free and are not for resale.

Plaid Cabin Quilt



Quilt Layout



All possible care has been taken to ensure the accuracy of this pattern. We are not responsible for printing errors or the manner in which individual work varies. Please read the instructions carefully before starting this project. If kitting it is recommended a sample is made to confirm accuracy. All free projects are intended to remain free and are not for resale.