



Free Project
NOT FOR RESALE

Rev Oct 2024

Jardin de Lune

by Episodic Drawing



Mystic Quilt

Designed by Denise Russell of Pieced Brain

Quilt size: 48" x 68"

Skill Level: Advanced Beginner

Blank Quilting Corporation

49 West 37th Street ♦ New York, NY 10018 - Tel: 800-294-9495 ♦ Fax: 212-679-4578

www.blankquilting.net

facebook

Jardin de Lune - Fabrics in the Collection



3824G-99 Pansy with Hummingbird - Black



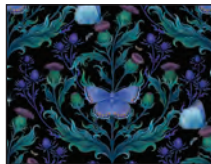
3825G-99 Tossed Small Floral - Black



3826G-99 Small Floral - Black



3827G-99 Butterflies Black



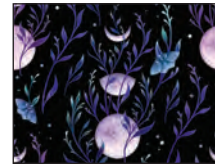
3828G-99 Butterflies with Greenery - Black



3829G-99 Mushrooms with Houses - Black



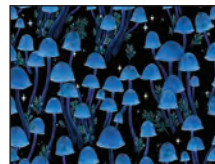
3830G-99 Crescent Moons with Flowers Black



3831G-99 Butterflies with Thistle Flowers Black



3832G-99 Crescent Moon with Butterflies Black

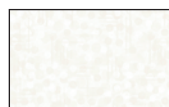


3833G-99 Mushrooms Black



3834GP-99 Panel 24" Black

Selected fabrics from the Jot Dot Collection



9570-09 Marshmallow



9570-50 Light Purple

Mystic Quilt

Materials

Yardages and cutting instructions based on 42" of usable fabric width.

One 3834GP-99 Panel 24" - Black
 ¼ yard 9570-50 Jot Dot - Light Purple
 ⅜ yard 3825G-99 Tossed Small Floral - Black
 ½ yard 3833G-99 Mushrooms - Black
 ½ yard 3830G-99 Crescent Moons with Flowers - Black
 ⅝ yard 3826G-99 Small Floral - Black
 ¾ yard 3824G-99 Pansy with Hummingbird - Black
 1⅜ yards 9570-09 Jot Dot - Marshmallow
 3¼ yards 3827G-99 Butterflies - Black for backing
 56" x 76" piece of Air Lite® Colour Me 100% Cotton batting

Cut Fabrics

Note: All strips are cut across the width of the fabric (WOF) from selvage to selvage unless otherwise indicated.

From 3834GP-99 Panel 24" - Black:

*Trim panel to 22¼" x 41¼". Draw a line around it ¼" away from the purple border. Then, with panel unfolded, cut with scissors or ruler and rotary cutter.

From 9570-50 Jot Dot - Light Purple, cut:

*(2) 2¼" x WOF strips for the strip sets.

From 3825G-99 Tossed Small Floral - Black, cut:

*(1) 3¾" x WOF strip. Sub-cut (8) 3¾" squares; cut twice diagonally (Triangles B).
 *(3) 2⅛" x WOF strips. Sub-cut (44) 2⅛" squares; cut once diagonally (Triangles A).

From 3833G-99 Mushrooms - Black, cut:

*(2) 2⅝" x WOF strips for border 2 - top/bottom.
 *(3) 2⅛" x WOF strips for border 2 - sides.

From 3830G-99 Crescent Moons with Flowers - Black, cut:

*(6) 2½" x WOF strips for binding.

From 3826G-99 Small Floral - Black, cut:

*(8) 2¼" x WOF strips:
 - Save 4 strips for the strip sets.
 - Sub-cut 4 strips into (72) 2¼" squares.

From 3824G-99 Pansy with Hummingbird - Black, cut:

*(6) 3½" x WOF strips for border 6.

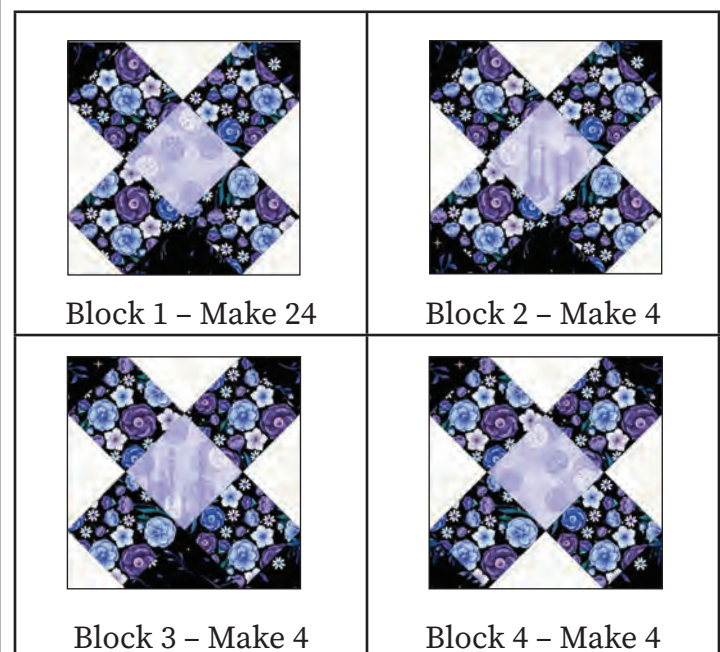
From 9570-09 Jot Dot - Marshmallow, cut:

*(3) 3¾" x WOF strips. Sub-cut (28) 3¾" squares; cut twice diagonally (Triangles D).
 *(2) 2⅛" x WOF strips. Sub-cut (28) squares; cut once diagonally (Triangles C)
 *(5) 2" x WOF strips for border 5.
 *(8) 1½" x WOF strips: 4 for border 1, 4 for border 3.

From 3827G-99 Butterflies - Black, cut:

*(2) 56" x WOF panels, pieced horizontally.

Assemble the Blocks



1. Sew a 2¼" 9570-50 Jot Dot - Light Purple strip between (2) 2¼" 3826G-99 Small Floral - Black strips to make a strip set. Press the seams to the center. Repeat to make 2 strip sets. Crosscut the strip sets into (36) 2¼" segments (*Figure 1*).

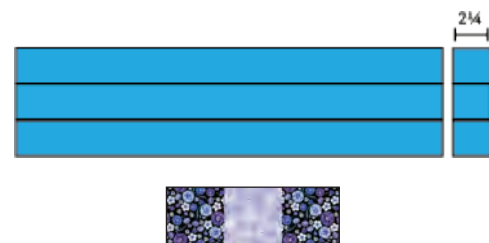


Figure 1 - Make 36.

2. Take 28 Step 1 units. Sew a 9570-09 Jot Dot - Marshmallow triangle C to the left short end and a 3825G-99 Tossed Small Floral - Black triangle A to

Mystic Quilt

the right end of each unit. Press the seams away from the center. Make 28 units R.

- Similarly, sew 2 Small Floral – Black triangles A to opposite ends of the remaining Step 1 units to make **12** units S (Figure 2).

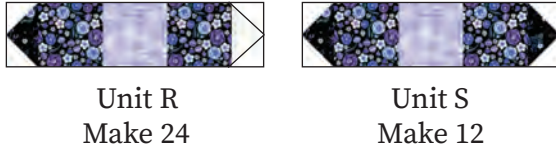
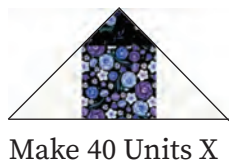


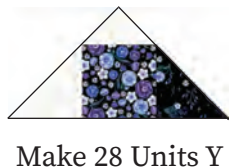
Figure 2 - Make 36 assorted units.

3. Gather the (72) 2¼" 3826G-99 Small Floral – Black squares, the 3825G-99 **Tossed** Small Floral – Black triangles A and B, and the 9570-09 Jot Dot – Marshmallow triangles C and D.

- Sew 2 Marshmallow triangles D to opposite sides of (40) 2¼" Small Floral – Black squares. Press the seams away from the center. Sew a Tossed Small Floral – Black triangle A to the top of each unit as shown. Press the seam away from the center. Make 40 corner units X.



- Sew a Marshmallow triangle D to the left side of a 2¼" 3826G-99 Small Floral – Black square and a 3825G-99 Tossed Small Floral – Black triangle B to the right side of the same square. Press the seams away from the center. Sew a Marshmallow triangle C to the top and press as before. Repeat to make 28 corner units Y.



- Sew a 3825G-99 Tossed Small Floral – Black triangle B to the left side of the 4 remaining 2¼" 3826G-99 Small Floral – Black squares, a Marshmallow triangle D to the right side, and a Marshmallow triangle C to the top of each unit. Press as before. Make 4 corner units Z (Figure 3).

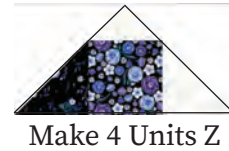


Figure 3 – Make 72 assorted corner units.

4. Assemble the blocks as shown and press the seams open (Figure 4). Make (36) 5½" assorted blocks.

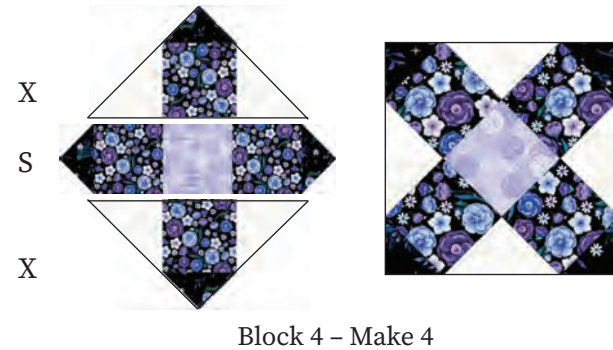
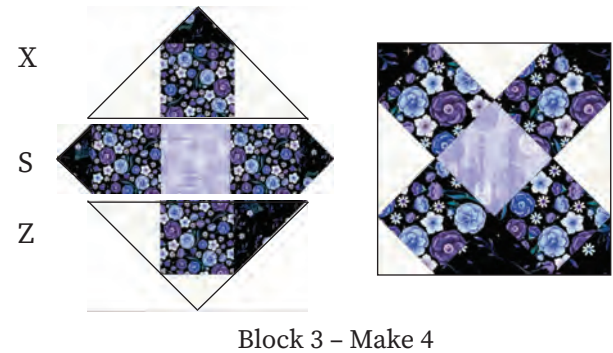
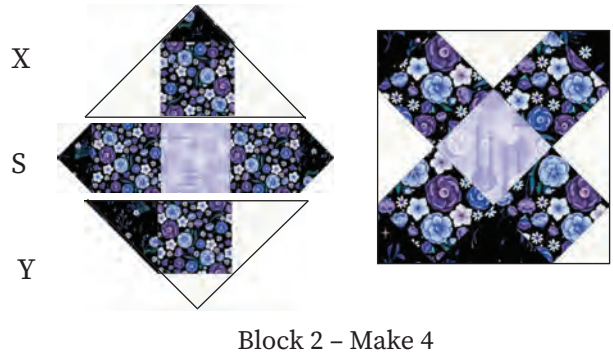
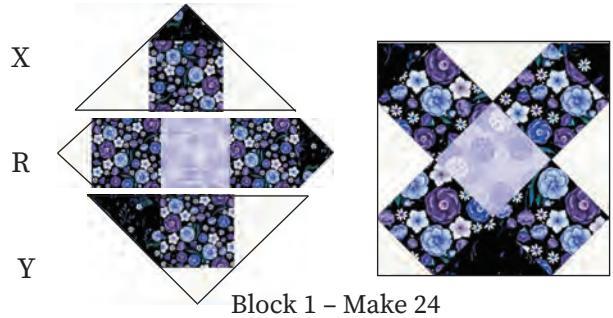


Figure 4 – Make (36) 5½" assorted blocks.

Mystic Quilt

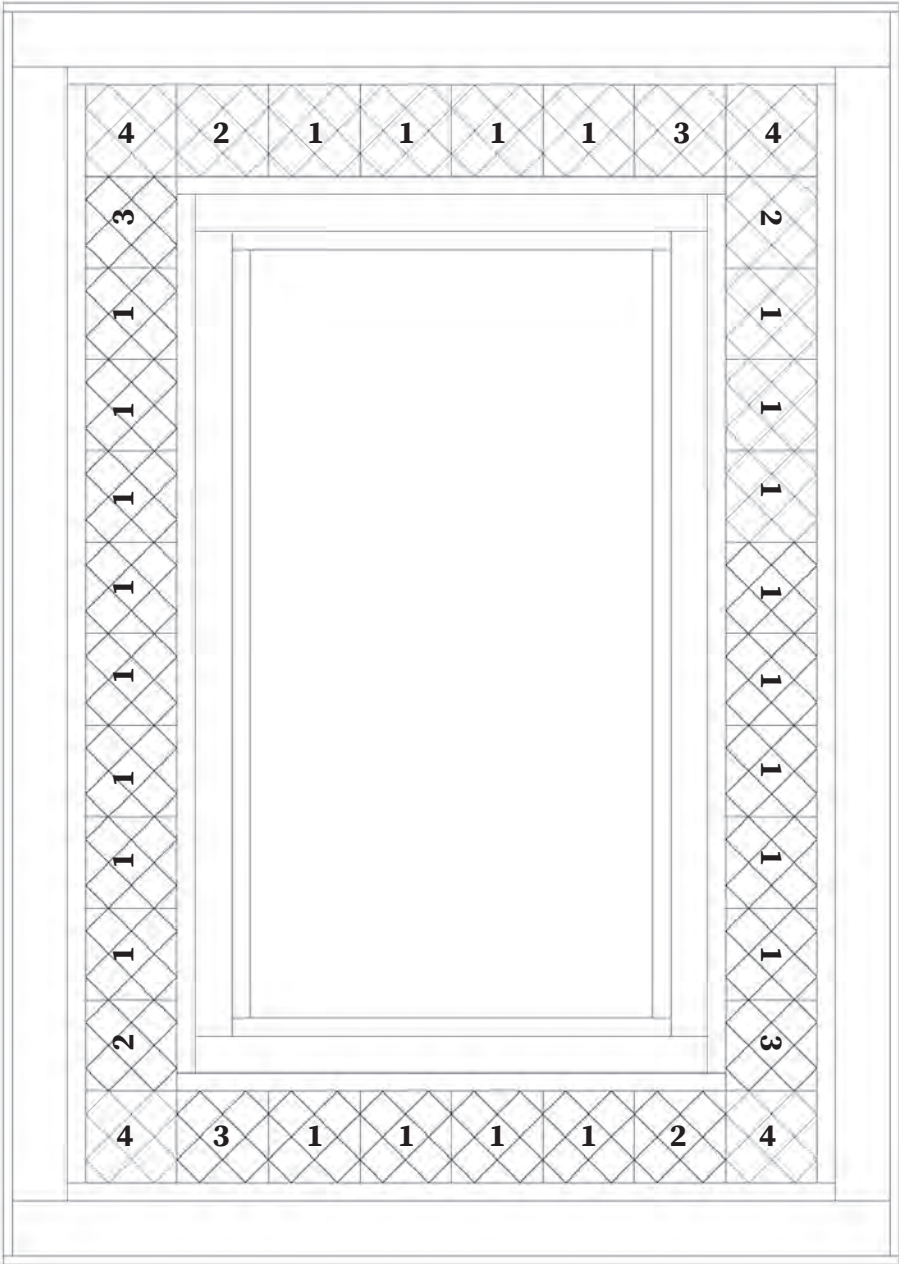
Assemble Quilt Top

5. For border 1, trim (2) 1½" 9570-09 Jot Dot-Marshmallow strips to 41¼". Sew one strip to each side of the quilt top and press the seams toward the border. Trim (2) 1½" Marshmallow strips to 24¼" and sew one to the top and one to the bottom. Press the seams toward the borders.
6. For border 2, sew the (3) 2⅛" 3833G-99 Mushrooms - Black strips together end to end with a diagonal seam. From the long strip, trim (2) 43¼" strips and sew them to the sides of the quilt center. Press toward the border. Trim the (2) 2⅝" Mushrooms - Black strips to 27½" and sew them to the top and bottom. Press as before.
7. For border 3, sew (4) 1½" 9570-09 Jot Dot-Marshmallow border strips together end to end using diagonal seams. Cut (2) 47½" border strips and sew them to the sides of the quilt top. Press the seams toward the border. Cut (2) 30½" border strips and sew one to the top and one to the bottom. Press as before. **The quilt measures 30½" x 50½" to this point.**
8. For border 4 and referring to the diagram on page 4, arrange 8 blocks in this order: 1 Block #2, 8 Blocks #1, and 1 Block #3. Sew the blocks together and press the seams open. Repeat to make another strip. Sew one border strip to each side of the quilt center. Press the seams toward the center.
 - For the top and bottom border strips, arrange and sew 1 Block #4, 1 Block #2, 4 Blocks #1, 1 Block #3, and 1 Block #4. Make 2 strips. Sew one to the top and one to the bottom of the quilt center. Press as before.
9. For border 5, sew (5) 2" 9570-09 Jot Dot-Marshmallow strips together end to end using diagonal seams. Measure the vertical length of the quilt top through the center and cut two border strips that length. Sew one strip to each side of the quilt top and press the seams toward the borders. Measure the width of the quilt top through the center. Cut two border strips that length and sew one to the top and one to the bottom. Press the seams toward the borders.
10. Repeat Step 9 with the (6) 3½" 3824G-99 Pansy with Hummingbird - Black strips to make and add border 6.

Finishing

11. Create a sandwich with the batting between the quilt top and the backing. Pin or baste layers together, mark the quilting design, and quilt by hand or machine. When quilting is complete, remove pins or basting, and trim batting and backing even with the raw edges of the quilt top.
12. Join the (6) 2½" 3830G-99 Crescent Moons with Flowers - Black binding strips together end to end using a diagonal seam to make one long strip. With wrong sides together, fold in half lengthwise and press. Sew the binding to the edges of the quilt, mitering corners and overlapping ends. Fold the binding to the back of the quilt and stitch it in place by hand to finish.

Mystic Quilt



Quilt Diagram