



Along the Coast

by Junebug



Migration Quilt

Designed by Denise Russell of Pieced Brain

Quilt Size: 56" x 56"

Skill Level: Beginner

Blank Quilting Corporation

49 West 37th Street ♦ New York, NY 10018 - Tel: 800-294-9495 ♦ Fax: 212-679-4578

www.blankquilting.net

facebook

Along the Coast - Fabrics in the Collection



3728-77 Fish with Seaweed - Dk. Blue



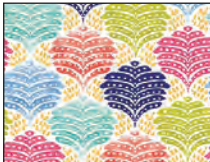
3729-01 Tossed Fish White on White



3729-77 Tossed Fish Dk. Blue



3730-77 Spaced Mandalas - Dk. Blue



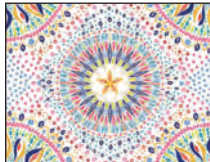
3731-01 Allover Geometric Abstract White



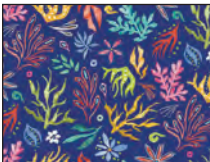
3732-77 Starfish Dk. Blue



3733-01 Seaweed White



3734-01 Mandala Allover - White



3735-77 Tossed Seaweed - Dk. Blue



3736-01 Stripe White



3738P-77 Mandala and Fish Panel 36\"/>



3737-01 Fish and Seaweed Blocks Dk. Blue

Selected fabric from the M lange Collection



4509-615 Cobalt Blue

MATERIALS

Yardages and cutting instructions are based on 42" of usable fabric width.

One 3737-01 Fish and Seaweed Blocks - Dk. Blue
 1/3 yard 3731-01 Allover Geometric Abstract – White
 1/3 yard 3735-77 Tossed Seaweed - Dk. Blue
 1/2 yard 4509-615 Mélange - Cobalt Blue
 1/2 yard 3733-01 Seaweed - White
 1/2 yard 3736-01 Stripe - White
 3/4 yard 3728-77 Fish with Seaweed - Dk. Blue
 3/4 yard 3729-77 Tossed Fish - Dk. Blue
 1 yard 3729-01 Tossed Fish - White
 3 1/2 yards 3732-77 Starfish - Dk. Blue for backing
 64" x 64" piece of Air Lite® Colour Me 100%
 Cotton batting

CUT FABRICS

Note: All strips are cut across the width of the fabric (WOF) from selvage to selvage unless otherwise indicated.

From 3737-01 Fish and Seaweed Blocks - Dk. Blue, fussy cut:

* (8) 8 1/2" squares.

From 3731-01 Allover Geometric Abstract – White, cut:

* (1) 7" x WOF strip. Sub-cut (6) 7" squares.

From 3735-77 Tossed Seaweed - Dk. Blue, cut:

* (4) 1 1/2" x WOF strips. Sub-cut:
 - (8) 1 1/2" x 10 1/2" rectangles.
 - (8) 1 1/2" x 9 1/2" rectangles.

From 4509-615 Mélange - Cobalt Blue, cut:

* (6) 2 1/2" x WOF strips for binding.

From 3733-01 Seaweed – White, cut:

* (5) 2 1/2" x WOF strips for border 2.

From 3736-01 Stripe - White, cut:

* (4) 1 1/2" x WOF strips. Sub-cut:
 - (8) 1 1/2" x 9 1/2" rectangles.
 - (8) 1 1/2" x 8 1/2" rectangles.
 * (5) 1 1/2" x WOF strips for border 1.

From 3728-77 Fish with Seaweed - Dk. Blue, cut:

* (6) 3 1/2" x WOF strips for border 4.

From 3729-77 Tossed Fish - Dk. Blue, cut:

* (2) 7" x WOF strips. Sub-cut (10) 7" squares.
 * (6) 1 1/2" x WOF strips for border 5.

From 3729-01 Tossed Fish – White, cut:

* (3) 7" x WOF strips. Sub-cut (16) 7" squares.
 * (5) 1 1/2" x WOF strips for border 3.

From 3732-77 Starfish - Dk. Blue, cut:

* (2) 64" x WOF panels, pieced horizontally.

ASSEMBLE THE BLOCKS

Note: Measurements include 1/4" seam allowances. Sew with right sides together unless otherwise stated. If no direction is specified, press the seams toward the darker fabric.

1. Sew a 1 1/2" x 8 1/2" 3736-01 Stripe – White rectangle to the left side of the (8) 8 1/2" 3737-01 Fish and Seaweed Blocks - Dk. Blue squares. Press the seams away from the center. Sew a 1 1/2" x 9 1/2" Stripe – White rectangle to the top of each square. Press as before. Sew a 1 1/2" x 9 1/2" 3735-77 Tossed Seaweed - Dk. Blue rectangle to the right side and a 1 1/2" x 10 1/2" Dk. Blue rectangle to the bottom of every unit to complete (8) 10 1/2" blocks (*Figure 1*). Press as before.

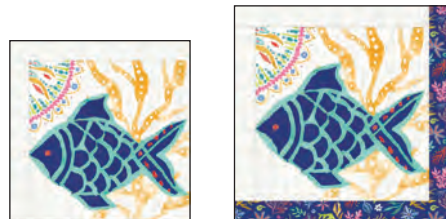


Figure 1 – Make (8) 10 1/2" blocks.

2. Draw two diagonal lines on the wrong side of the 7" 3729-01 Tossed Fish – White squares (a). Layer a marked White square atop a 7" 3729-77 Tossed Fish - Dk. Blue square. Stitch 1/4" from each side of the diagonal lines (b), cut vertically and horizontally to make four equal squares (c), then cut each square on the drawn lines to make 8 half-square triangles (d). Press open and trim dog ears. Repeat with 9 more White and Dk. Blue squares to make (80) 3" half-square triangles (HST). Trim if necessary.

- Repeat this step with the remaining 7" White squares and the (6) 7" 3731-01 Allover Geometric Abstract – White squares to make (48) 3" HST (Figure 2).

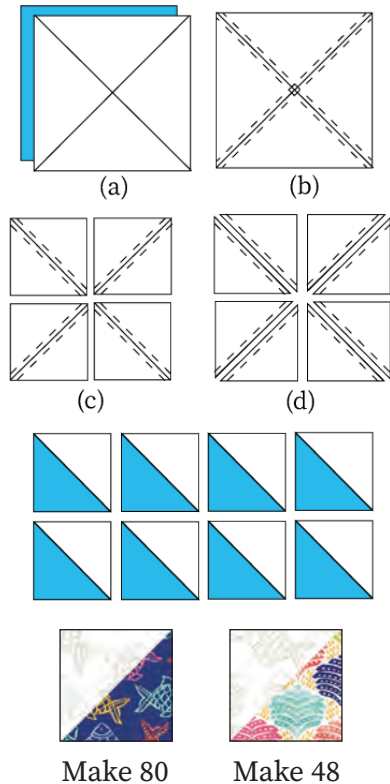


Figure 2

3. Arrange the Step 2 HST in 4 rows of 4 as shown, noting the fabric orientation. Sew the units together in each row and press the seams in alternate directions from row to row. Sew the rows together and press the seams open (Figure 3). Make (8) 10½" blocks.

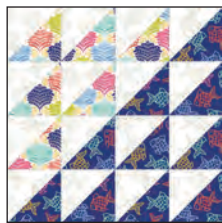


Figure 3 – Make (8) 10½" blocks.

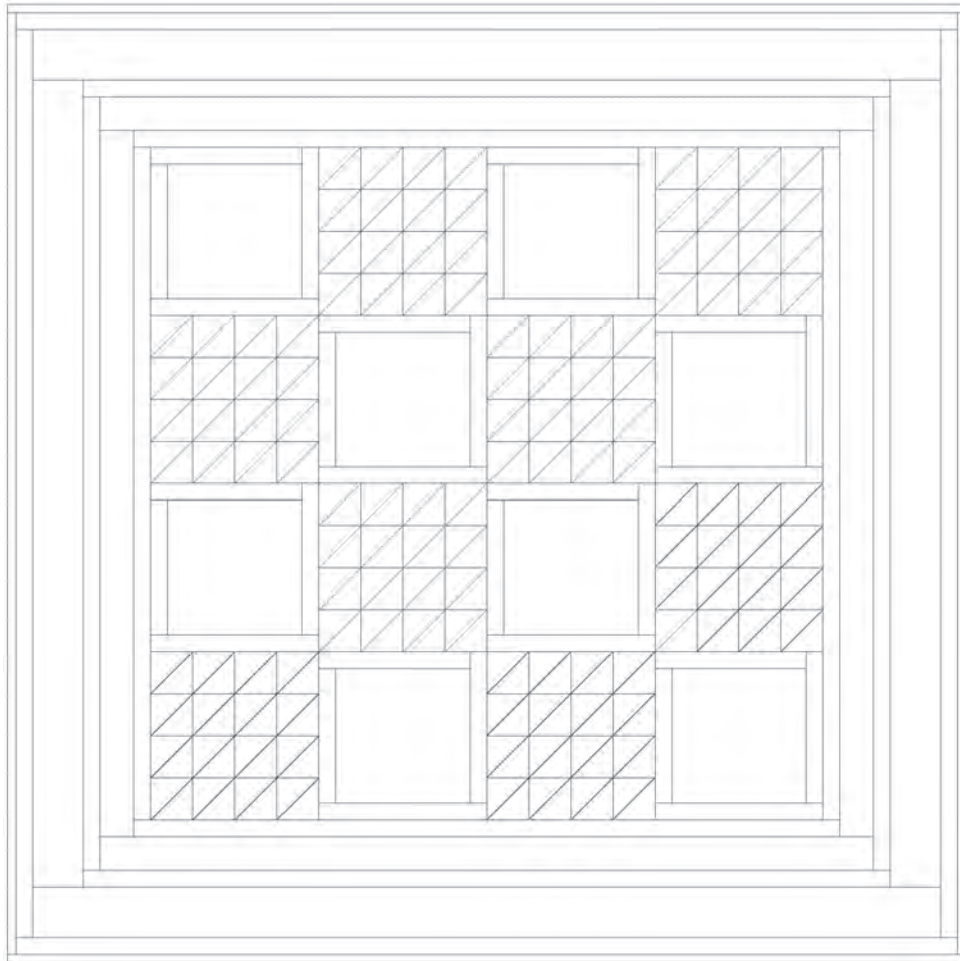
ASSEMBLE THE QUILT

4. Referring to the quilt photo and diagram for block placement and orientation, lay out 4 rows of 4 blocks. Join the blocks together in each row. Press the seams in opposite directions from row to row. Matching adjacent seams, sew the rows together in order.
5. For border 1, measure the vertical length of the quilt top through the center and trim (2) 1½" 3736-01 Stripe - White strips that length. Sew 1 strip to each side of the quilt top and press the seams toward the border strips. Measure the width of the quilt top through the center. Trim 2 more Stripe - White strips that length and sew 1 to the top and 1 to the bottom. Press the seams toward the borders.
6. For border 2, sew (5) 2½" 3733-01 Seaweed – White border strips together end to end using diagonal seams. Measure the vertical length of the quilt top through the center and cut 2 border strips that length. Sew 1 strip to each side of the quilt top and press the seams toward the borders. Measure the width of the quilt top through the center. Cut 2 border strips that length and sew 1 to the top and 1 to the bottom. Press the seams toward the borders.
7. Repeat Step 6 with the (5) 1½" 3729-01 Tossed Fish – White strips to make and add border 3.
8. Repeat Step 6 with the (6) 3½" 3728-77 Fish with Seaweed - Dk. Blue strips to make and add border 4.
9. Repeat Step 6 with the (6) 1½" 3729-77 Tossed Fish - Dk. Blue strips to make and add border 5.

FINISHING

10. Create a sandwich with the batting between the quilt top and the backing. Pin or baste the layers together, mark the quilting design, and quilt by hand or machine. When the quilting is complete, remove the pins or basting, and trim the batting and backing even with the raw edges of the quilt.

11. Join the (6) 2½" 4509-615 Mélange - Cobalt Blue binding strips together end to end using a diagonal seam to make one long strip. With wrong sides together, fold in half lengthwise and press. Sew the binding to the edges of the quilt top, mitering corners and overlapping ends. Fold the binding to the back of the quilt and stitch it in place by hand to finish.
-



Quilt Diagram

©2024 Blank Quilting Corporation

Every effort has been made to ensure that all projects are error free. All the information is presented in good faith; however, no warranty can be given nor results guaranteed as we have no control over the execution of instructions. Therefore, we assume no responsibility for the use of this information or damages that may occur as a result. When errors are brought to our attention, we make every effort to correct and post a revision as soon as possible. Please make sure to check www.blankquilting.net for pattern updates prior to starting the project. We also recommend that you test the project prior to cutting for kits. Finally, all free projects are intended to remain free to you and are not for resale.