

# Majestic Quilt



Finished Size: **52½" x 52½" (1.33m x 1.33m)**

Finished Block Size: **11" (27.94cm)**

Fabric Collection Name and Fabric Designer: **Wilderness Song by Marilyn Lee**

Technique: **Pieced**

Designed by: **Denise Russell of Pieced Brain**

Skill Level: **Advanced Beginner**

Tech Edited by: **Julie Kentner**



# Majestic Quilt



## Fabric Requirements

DESIGN	COLOR	ITEM ID	YARDAGE
<b>(A)</b> Tree Bark	Brown	4170-39	7/8 yard (0.80m)
<b>(B)</b> Forest Moss, Leaves and Pine Cones	Green	4171-66	3/8 yard (0.34m)
<b>(C)</b> Wildlife In The Forest	Green	4173-66	5/8 yard (0.57m)
<b>(D)</b> Forest Trees	Green	4175-60	3/8 yard (0.34m)
<b>(E)</b> Clouds with Trees	Blue	4176-75	1/2 yard (0.46m)
<b>(F)</b> Moose	Brown	4177-39	3/8 yard (0.34m)
<b>(G)</b> White Tail Bucks	Brown	4178-39	3/8 yard (0.34m)
<b>(H)</b> Eagles	Brown	4179-39	3/8 yard (0.34m)
<b>(I)</b> Bears	Black	4182-99	3/8 yard (0.34m)
<b>(J)</b> Verona	Cocoa	2311-39*	1/2 yard (0.46m)
<b>(K)</b> Verona	Parchment	2311-41	1 1/4 yards (1.14m)
<b>(L)</b> Verona	Taupe	2311-60	1/3 yard (0.30m)

\* includes binding



## Backing (Purchased Separately)

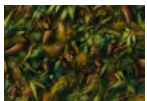
44" (1.12m) wide

Forest Moss, Leaves and Pine Cones      Green      4171-66      3 3/8 yards (3.09m)

OR

108" (2.74m) wide

Spin Flannel 108"      Cream      3995F-41      1 2/3 yards (1.52m)



Backing  
44"



Backing  
108"

## Additional Materials:

- 100% Cotton Thread in neutral or coordinating color
- Batting: 60" x 60" (1.52m x 1.52m)

*All possible care has been taken to ensure the accuracy of this pattern. We are not responsible for printing errors or the manner in which individual work varies.*

*Please read the instructions carefully before starting this project. If kitting it is recommended a sample is made to confirm accuracy.*

*All free projects are intended to remain free and are not for resale.*

## CUTTING

### Notes:

- Please make sure to check [www.blankquilting.net](http://www.blankquilting.net) for pattern updates prior to starting the project.
- All strips are cut across the width of fabric (WOF) from selvage to selvage unless otherwise noted.

### Fabric A, cut:

- (1) 7½" x WOF; subcut
  - (4) 7½" squares
- (5) 2" x WOF; subcut
  - (2) 2" x 19½"
  - (2) 2" x 22½" for Border 2
- (6) 1½" x WOF for Border 6

### Fabric B, cut:

- (3) 3½" x WOF; subcut
  - (32) 3½" squares

### Fabric C, fussy cut:

- (1) 17½" square

### Fabric D, cut:

- (5) 2" x WOF for Border 5

### Fabric E, cut:

- (2) 6" x WOF; subcut
  - (8) 6" squares

### Fabrics F, G, H, and I, fussy cut from each:

- (1) 9½" square

### Fabric J, cut:

- (6) 2½" x WOF for binding

### Fabric K, cut:

- (1) 7½" x WOF; subcut
  - (4) 7½" squares
- (3) 6" x WOF; subcut
  - (32) 3¼" x 6" rectangles
- (5) 2" x WOF for Border 4
- (2) 1½" x WOF; subcut
  - (2) 1½" x 17½"
  - (2) 1½" x 19½" for Border 1

### Fabric L, cut:

- (5) 1½" x WOF; subcut
  - (8) 1½" x 11½" rectangles
  - (8) 1½" x 9½" rectangles

## SEWING

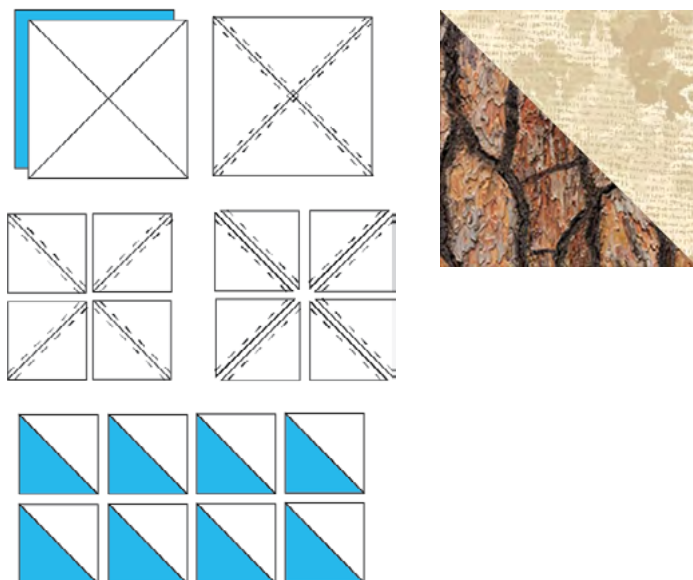
### Notes:

- All seam allowances are  $\frac{1}{4}$ " (0.64cm).
- Sew pieces with right sides together (RST).
- Press as noted in each step.
- HST = Half Square Triangle

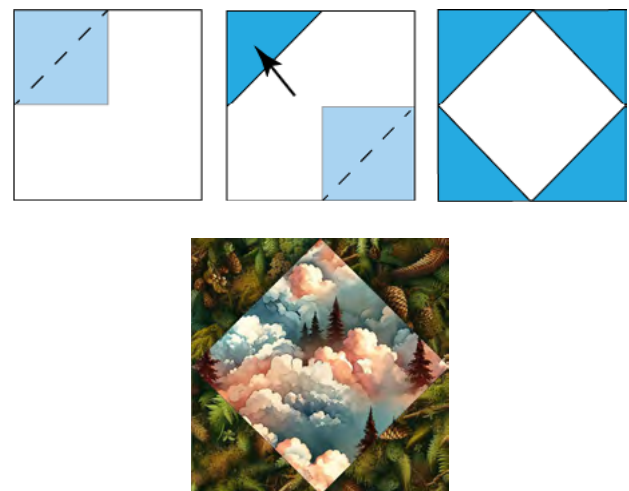
### BLOCK 1

1. Draw a diagonal line from corner to corner both directions (making an "X") on the reverse side of each  $7\frac{1}{2}$ " **Fabric K** square. Layer a marked **Fabric K** square atop a  $7\frac{1}{2}$ " **Fabric A** square, right sides together. Sew on both sides of each line using a  $\frac{1}{4}$ " seam allowance. Cut each set of sewn squares in half vertically and horizontally, then cut on the drawn lines as shown in **Fig. 1**. Press the seam toward the darker fabric and trim each unit to  $3\frac{1}{4}$ ". Repeat with the remaining **Fabrics K** and **A** squares to make (32)  $3\frac{1}{4}$ " half-square triangles (**Fig. 1**).
2. Draw a diagonal line on the wrong side of the  $3\frac{1}{2}$ " **Fabric B** squares. With right sides together, place a marked **Fabric B** square on a corner of a 6" **Fabric E** square and stitch on the drawn line. Repeat with the opposite corner of the same square. Trim seam allowances to  $\frac{1}{4}$ " and press toward the corners. Similarly, sew 2 more **Fabric B** squares to the opposite corners of the **Fabric E** square. Repeat with the remaining **Fabrics B** and **E** squares to make (8) 6" center units (**Fig. 2**).

**Fig. 1**



**Fig. 2**



*All possible care has been taken to ensure the accuracy of this pattern. We are not responsible for printing errors or the manner in which individual work varies.*

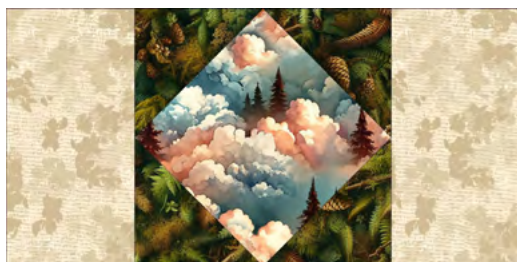
*Please read the instructions carefully before starting this project. If kitting it is recommended a sample is made to confirm accuracy.*

*All free projects are intended to remain free and are not for resale.*

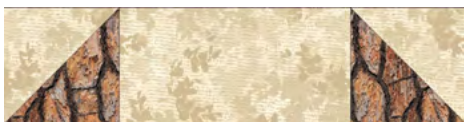
# Majestic Quilt

3. Sew (2)  $3\frac{1}{4}$ " x 6" **Fabric K** rectangles to the left and right sides of the (8) center units. Press seams away from the center. Sew a Step 1 HST to each end of the remaining **Fabric K** rectangles, making sure to note fabric orientation. Press seams toward the center. Sew these rows to the top and bottom of the center units to make (8)  $11\frac{1}{2}$ " Block 1 (**Figs 3-3b**).

**Fig. 3**



**Fig. 3a**



**Fig. 3b**



## BLOCK 2

4. Sew (2)  $1\frac{1}{2}$ " x  $9\frac{1}{2}$ " **Fabric L** rectangles to the left and right sides of a  $9\frac{1}{2}$ " **Fabric F** square. Press seams away from the center. Sew a  $1\frac{1}{2}$ " x  $11\frac{1}{2}$ " **Fabric L** rectangle to the top and bottom of the **Fabric F** square. Press seams away from the center (**Figs 4, 4a**).

**Fig. 4**



**Fig. 4a**



5. Repeat Step 4 with the remaining **Fabric L** rectangles and **Fabrics G, H, and I** squares to make a total of (4)  $11\frac{1}{2}$ " Block 2.



## QUILT TOP ASSEMBLY

**Note:** Follow the Quilt Layout Diagram (page 8) while assembling the quilt top, paying close attention to the orientation of blocks.

6. Sew the (2) 1½" x 17½" **Fabric K** Border 1 rectangles to the left and right sides of the 17½" **Fabric C** square. Press seams away from the center. Sew the (2) 1½" x 19½" **Fabric K** Border 1 rectangles to the top and bottom of the **Fabric C** square. Press seams away from the center.
7. Sew the (2) 2" x 19½" **Fabric A** Border 2 rectangles to the left and right sides of the center. Press seams away from the center. Sew the (2) 2" x 22½" **Fabric A** Border 2 rectangles to the top and bottom of the center. Press seams away from the center – it will measure 22½" x 22½".
8. Border 3 will be made by arranging the Block 1 and Block 2 units around the Quilt Center. It will be helpful to refer to the Cover Image and Quilt Layout Diagram for this step. Arrange (2) Block 1 in a vertical row for both the left and right sides of the quilt. Sew the blocks together in pairs then press the seams in one direction. Attach one border strip to each side of the quilt center. Press seams toward the border.
9. Repeat step 8 with (2) Block 1 and (2) Block 2 as shown on the pattern cover. Sew one border strip to the top and the bottom of the quilt center. Press as before.
10. For Border 4, sew the (5) 2" **Fabric K** border strips together end to end using diagonal seams. Measure the vertical length of the quilt through the center and cut (2) **Fabric K** border strips that length. Sew one strip to the left and one to the right sides of the quilt. Press seams toward the borders. Measure the width of the quilt through the center. Cut (2) **Fabric K** border strips to that length and sew one to the top and one to the bottom. Press the seams toward the borders.
11. Repeat step 10 with the (5) 2" **Fabric D** strips to make and add Border 5.
12. Repeat step 10 with the (6) 1½" **Fabric A** strips to make and add Border 6.

## FINISHING

13. Sew together the (6) 2½" **Fabric J** binding strips end to end using diagonal seams. Press the seams open. Press the binding strip in half with the wrong sides together and set aside until the quilt is ready for binding.
14. Once the top is complete it is ready for quilting! Quilts can be sent out for longarm quilting or you can quilt it yourself. If you are sending the quilt out, it is important to discuss backing and batting requirements with the quilter to ensure they have everything needed to properly finish the quilt.

*All possible care has been taken to ensure the accuracy of this pattern. We are not responsible for printing errors or the manner in which individual work varies.*

*Please read the instructions carefully before starting this project. If kitting it is recommended a sample is made to confirm accuracy.*

*All free projects are intended to remain free and are not for resale.*

# Majestic Quilt



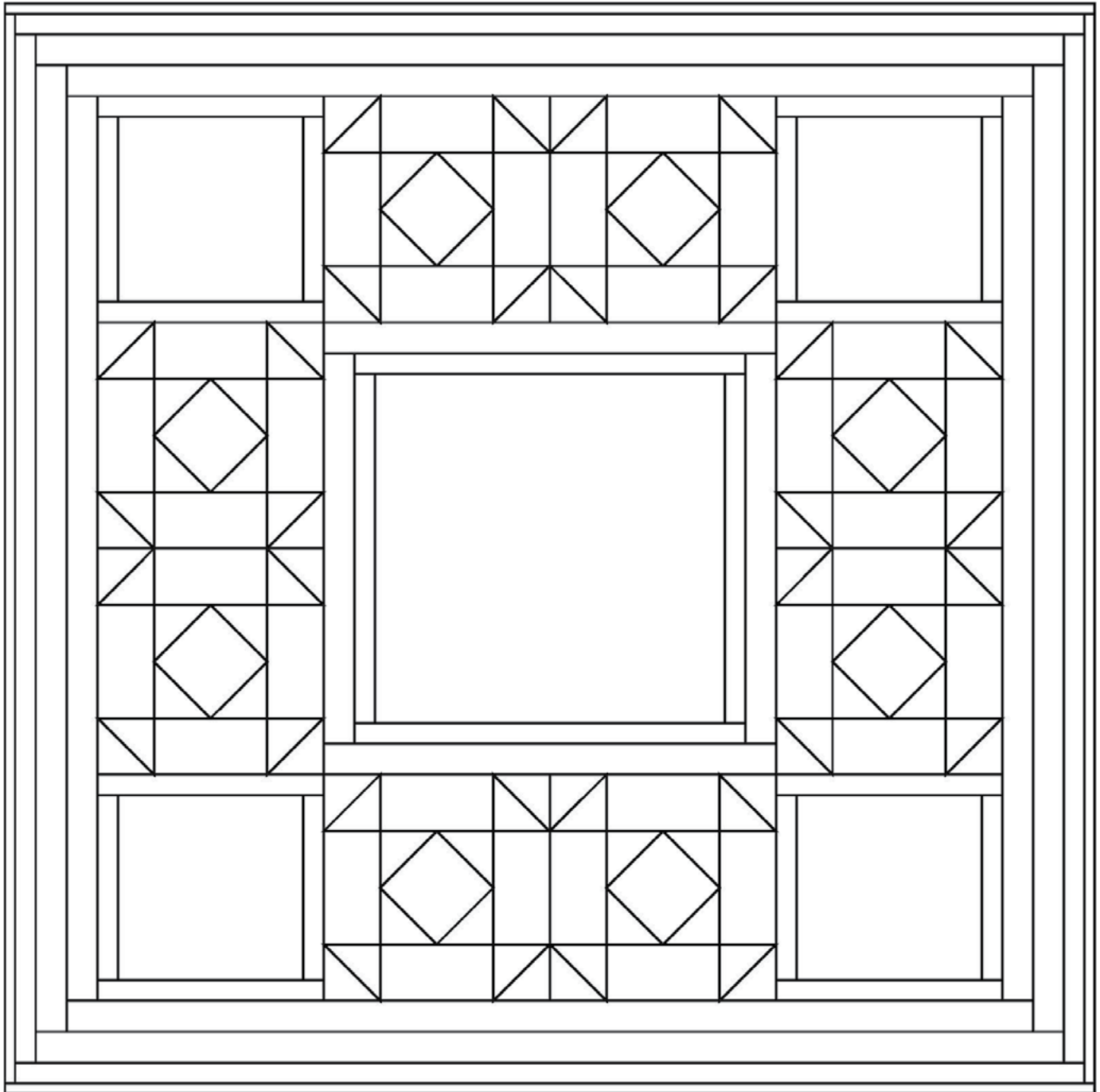
15. If quilting yourself and using 44" fabric for backing, choose your favorite method for piecing (taking time to remove selvages), then layer, baste and quilt. Once finished, trim excess batting and backing and bind according to your favorite method.
16. To complete binding by hand, it must first be machine sewn to the quilt top. Leaving an 8" tail of binding, sew binding to top of quilt through all layers, matching raw edges. Miter corners. Stop approximately 12" from where you started. Lay both loose ends of binding flat along quilt edge. Where the two loose ends meet, fold each side back on themselves and press to form a crease. Using this crease as your stitching line, sew the two open ends of the binding together right sides together. Trim seam to  $\frac{1}{4}$ " and press seam open. The binding will naturally fold, wrong sides together, and lay along the quilt edge. Finish sewing binding to quilt. Turn and press the binding to the back of the quilt and hand stitch in place.
17. If machine binding, complete the steps above only attach the binding to the BACK of the quilt, turn and press binding to the front of the quilt and machine stitch in place.

*All possible care has been taken to ensure the accuracy of this pattern. We are not responsible for printing errors or the manner in which individual work varies.*

*Please read the instructions carefully before starting this project. If kitting it is recommended a sample is made to confirm accuracy.*

*All free projects are intended to remain free and are not for resale.*

## Quilt Layout



*All possible care has been taken to ensure the accuracy of this pattern. We are not responsible for printing errors or the manner in which individual work varies.*

*Please read the instructions carefully before starting this project. If kitting it is recommended a sample is made to confirm accuracy.*

*All free projects are intended to remain free and are not for resale.*