

Call of the Wild Quilt



Finished Quilt Size: **48½" x 60½" (1.23m x 1.54m)**

Finished Block Size: **12" x 12" (30.5cm x 30.5cm)**

Fabric Collection Name & Fabric Designer: **Wilderness Song by Marilyn Lee**

Technique: **Pieced**

Designed by: **Lisa Swenson Ruble, Quilty Zest**

Skill Level: **Advanced Beginner**

Tech Edited by: **Julie Kentner**

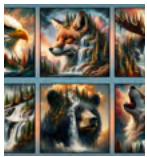
Call of the Wild Quilt



Fabric Requirements

DESIGN	COLOR	ITEM ID	YARDAGE
(A) Wildlife Blocks	Lt. Blue	4168-70	2/3 yard (0.61m)
(B) Tree Bark	Brown	4170-39	7/8 yard (0.80m)
(C) Water/Waves	Blue	4174-75	7/8 yard (0.80m)
(D) Clouds with Trees	Blue	4176-75	1 5/8 yards (1.49m)
(E) Melange Basic	Ochre	4509-303	1/2 yard (0.46m)
(F) Melange Basic	Grey Green	4509-706*	1 yard (0.91m)

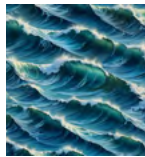
* includes binding



(A)



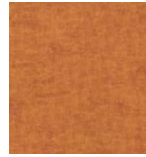
(B)



(C)



(D)



(E)



(F)

Backing (Purchased Separately)

44" (1.12m) wide

Waterfalls

Blue

4172-75

3 1/4 yards (2.97m)

OR

108" (2.74m) wide

1 5/8 yards (1.49m)



Backing
44"

Additional Materials:

- 100% cotton thread in neutral or coordinating color
- 57" x 69" (1.45m x 1.75m) batting

All possible care has been taken to ensure the accuracy of this pattern. We are not responsible for printing errors or the manner in which individual work varies.

Please read the instructions carefully before starting this project. If kitting it is recommended a sample is made to confirm accuracy.

All free projects are intended to remain free and are not for resale.

Cutting

Notes:

- Please make sure to check www.blankquilting.net for pattern updates prior to starting the project.
- All strips are cut across the width of fabric (WOF) from selvage to selvage unless otherwise noted.
- QST = Quarter Square Triangle

Fabric A, cut:

Fussy cut (6) 11" squares

Fabric B, cut:

(2) 13¼" x WOF; subcut

- (4) 13¼" squares then cut square diagonally in half twice to make
- (16) QSTs (not all will be used)

Fabric C, cut:

(2) 13¼" x WOF; subcut

- (4) 13¼" squares then cut square diagonally in half twice to make
- (16) QSTs (not all will be used)

Fabric D, cut:

(2) 4½" x LOF; subcut

(2) 4½" x 52½" strips

(4) 4½" x WOF; sew the strips together end to end with 45-degree diagonal seams and cut

(2) 4½" x 48½" strips

Fabric E, cut:

(1) 12½" x WOF; subcut

(12) 1¼" x 12½" rectangles then cut strip down to 11" wide and subcut

(12) 1¼" x 11" rectangles

Fabric F, cut:

(6) 2½" x WOF for the binding

(5) 2½" x WOF; sew the strips together end to end with 45-degree diagonal seams and cut

(2) 2½" x 48½" strips

(2) 2½" x 40½" strips

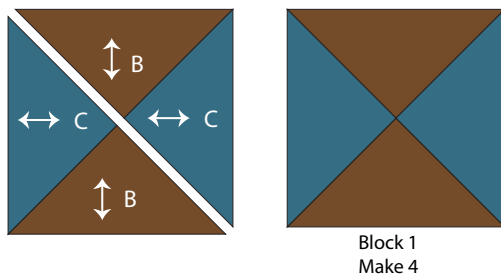
Block Assembly

Notes:

- All seam allowances are $\frac{1}{4}$ " (.64cm) unless otherwise noted.
- Sew pieces right sides together.
- Press seam allowances open unless otherwise indicated.

1. Lay out (2) each **Fabric B** QST and (2) each **Fabric C** QST, noting directional fabric orientation as shown in **Fig. 1**. Sew QSTs together in pairs then join the pairs to make Block One. Square up to measure $12\frac{1}{2}$ " square. Make (4) Block One.
3. Sew $1\frac{1}{4}$ " x 11" **Fabric E** rectangles to the left and right sides of (1) 11" **Fabric A** square. Sew $1\frac{1}{4}$ " x $12\frac{1}{2}$ " **Fabric E** rectangles to the top and bottom to make (1) Block Three as shown in **Fig. 3**. Make (6) Block Three measuring $12\frac{1}{2}$ " square.

Fig. 1



2. Lay out (2) each **Fabric B** QST and (2) each **Fabric C** QST, noting directional fabric orientation as shown in **Fig. 2**. Sew QSTs together in pairs then join the pairs to make Block Two. Square up to measure $12\frac{1}{2}$ " square. Make (2) Block Two.

Fig. 2

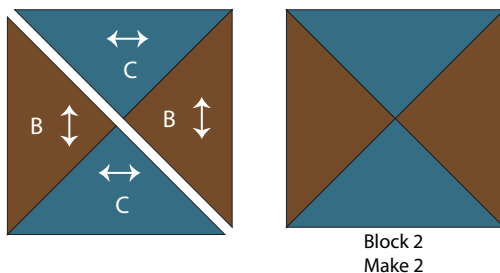
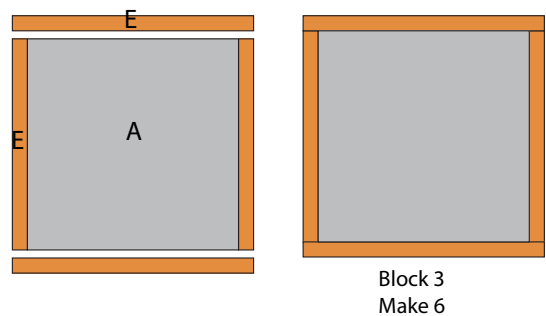


Fig. 3



All possible care has been taken to ensure the accuracy of this pattern. We are not responsible for printing errors or the manner in which individual work varies.

Please read the instructions carefully before starting this project. If kitting it is recommended a sample is made to confirm accuracy.

All free projects are intended to remain free and are not for resale.

Quilt Top Assembly

Follow the Quilt Layout (page 6) while assembling the quilt top.

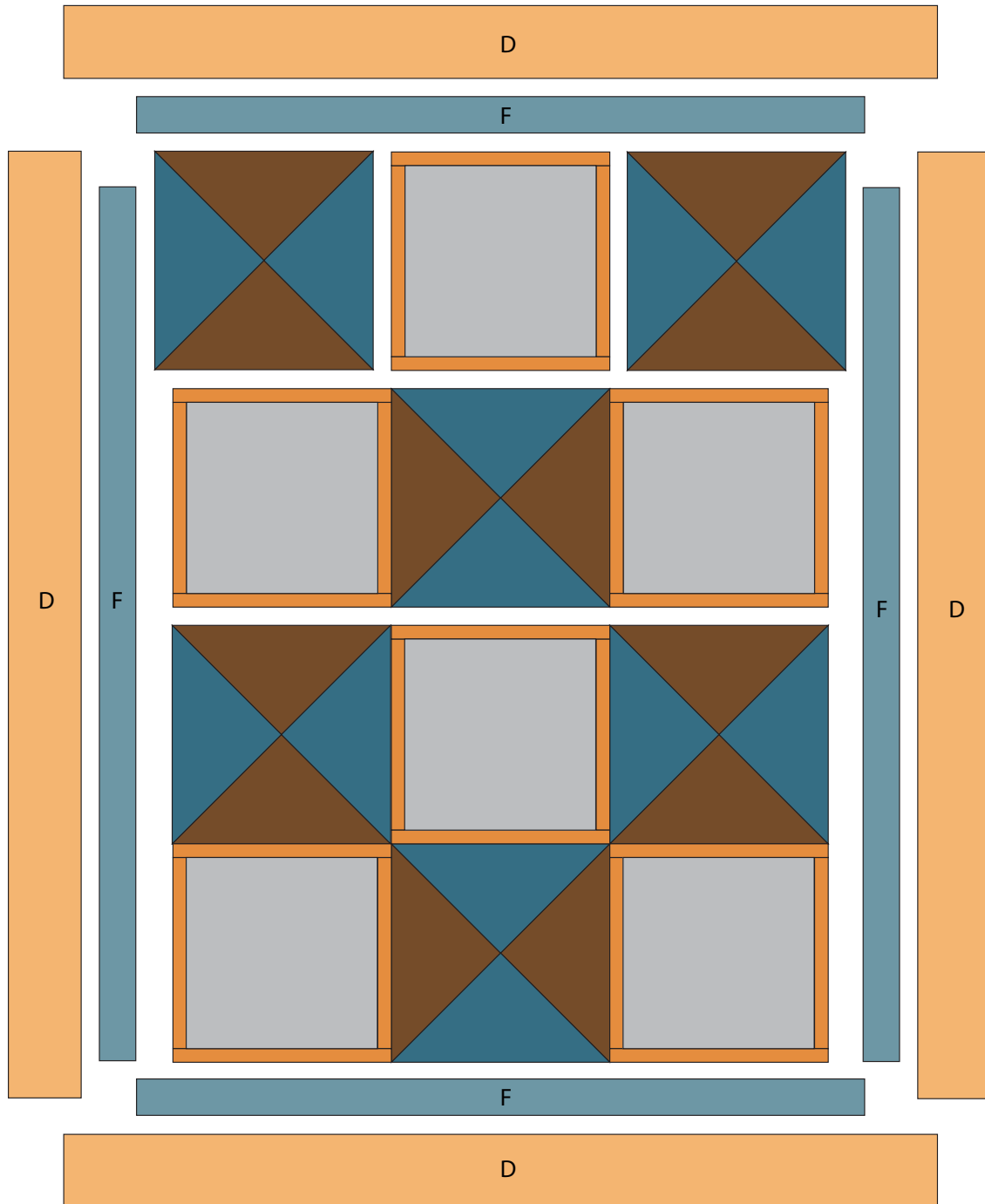
4. Lay out (4) Block One, (2) Block Two and (6) Block Three into (4) rows of (3) blocks each. Sew the blocks into rows, pressing odd rows in one direction and even rows in the opposite direction. Join the rows together, nesting seams, to complete the Quilt Center. Press seams down.
5. Sew (1) 2½" x 48½" **Fabric F** strip to the left and right sides of the Quilt Center. Sew (1) 2½" x 40½" **Fabric F** strip to the top and bottom of the Quilt Center.
6. Sew (1) 4½" x 52½" **Fabric D** strip to the left and right sides of the Quilt Center. Sew (1) 4½" x 48½" **Fabric D** strip to the top and bottom to complete the quilt top which measures 48½" x 60½".

Finishing

7. Sew together the (6) 2½" x WOF **Fabric F** binding strips end to end using diagonal seams. Press the seams open. Press the binding strip in half wrong sides together.
8. Once the top is complete it is ready for quilting! Quilts can be sent out for longarm quilting or you can quilt it yourself. If you are sending the quilt out, it is important to discuss backing and batting requirements with the quilter to ensure they have everything needed to properly finish the quilt.

9. If quilting yourself and using 44" fabric for backing, choose your favorite method for piecing (taking time to remove selvages), then layer, baste and quilt. Once finished, trim excess batting and backing and bind according to your favorite method.
10. To complete binding by hand, it must first be machine sewn to the quilt top. Leaving an 8" tail of binding, sew binding to top of quilt through all layers, matching raw edges. Miter corners. Stop approximately 12" from where you started. Lay both loose ends of binding flat along quilt edge. Where the two loose ends meet, fold each side back on themselves and press to form a crease. Using this crease as your stitching line, sew the two open ends of the binding together right sides together. Trim seam to ¼" and press seam open. The binding will naturally fold, wrong sides together, and lay along the quilt edge. Finish sewing binding to quilt. Turn and press the binding to the back of the quilt and hand stitch in place.
11. If machine binding, complete the steps above only attach the binding to the BACK of the quilt, turn and press binding to the front of the quilt and machine stitch in place.

Quilt Layout



All possible care has been taken to ensure the accuracy of this pattern. We are not responsible for printing errors or the manner in which individual work varies.

Please read the instructions carefully before starting this project. If kitting it is recommended a sample is made to confirm accuracy.

All free projects are intended to remain free and are not for resale.