

To the Rescue Throw



Finished Quilt Size: **66" x 66" (1.68m x 1.68m)**

Finished Block Size: **17" x 17" (43.2cm x 43.2cm)**

Fabric Collection Name & Fabric Designer: **Fire Alarm by Paul Walsh**

Technique: **Pieced**

Designed by: **Lisa Swenson Ruble, Quilty Zest**

Skill Level: **Advanced Beginner**

Tech Edited by: **Julie Kentner**

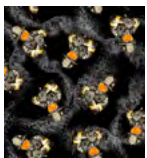
To the Rescue Throw



Fabric Requirements

DESIGN	COLOR	ITEM ID	YARDAGE
(A) Firefighter with hose	Black	4093-99	1½ yards (1.22m)
(B) Flames	Orange	4097-33*	1½ yards (1.03m)
(C) Smoke	Charcoal	4098-95	1 yard (0.91m)
(D) Tiny Flame	White	4099-01	⅞ yard (0.80m)
(E) Firefighter Collage	Yellow	4102-44	FQ
(F) Firefighter Blocks	Gray	4103-90	⅔ yard (0.61m)
(G) Eclipse	Black	3955 Jet Black	⅝ yard (0.57m)

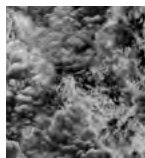
* includes binding



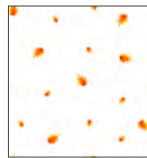
(A)



(B)



(C)



(D)



(E)



(F)



(G)

Backing (Purchased Separately)

44" (1.12m) wide
Firefighter Collage

Yellow

4102-44

4¼ yards (3.89m)

OR

108" (2.74m) wide

2⅞ yards (1.94m)



Backing
44"

Additional Materials:

- 100% cotton thread in neutral or coordinating color
- 74" x 74" (1.88m x 1.88m) batting

All possible care has been taken to ensure the accuracy of this pattern. We are not responsible for printing errors or the manner in which individual work varies.

Please read the instructions carefully before starting this project. If kitting it is recommended a sample is made to confirm accuracy.

All free projects are intended to remain free and are not for resale.

To the Rescue Throw



Cutting

Notes:

- Please make sure to check www.blankquilting.net for pattern updates prior to starting the project.
- All strips are cut across the width of fabric (WOF) from selvage to selvage unless otherwise noted.

Fabric A, cut:

(7) 5½" x WOF; Remove selvages and sew the strips together end to end with 45-degree diagonal seams, then cut

(2) 5½" x 65½" strips

(2) 5½" x 55½" strips

Fabric B, cut:

(7) 2½" x WOF for the binding

(6) 2½" x WOF; Remove selvages and sew the strips together end to end with 45-degree diagonal seams, then cut

(2) 2½" x 55½" strips

(2) 2½" x 51½" strips

Fabric C, cut:

(9) 3" x WOF; subcut

(10) 3" x 17½" rectangles

(10) 3" x 12½" rectangles

Fabric D, cut:

(7) 3" x WOF; subcut

(8) 3" x 17½" rectangles

(8) 3" x 12½" rectangles

Fabric E, cut:

(1) 10½" square

Fabric F, cut:

Fussy cut (8) 10½" squares

Fabric G, cut:

(12) 1½" x WOF; subcut

(18) 1½" x 12½" rectangles

(18) 1½" x 10½" rectangles

All possible care has been taken to ensure the accuracy of this pattern. We are not responsible for printing errors or the manner in which individual work varies.

Please read the instructions carefully before starting this project. If kitting it is recommended a sample is made to confirm accuracy.

All free projects are intended to remain free and are not for resale.

To the Rescue Throw



Block Assembly

Note:

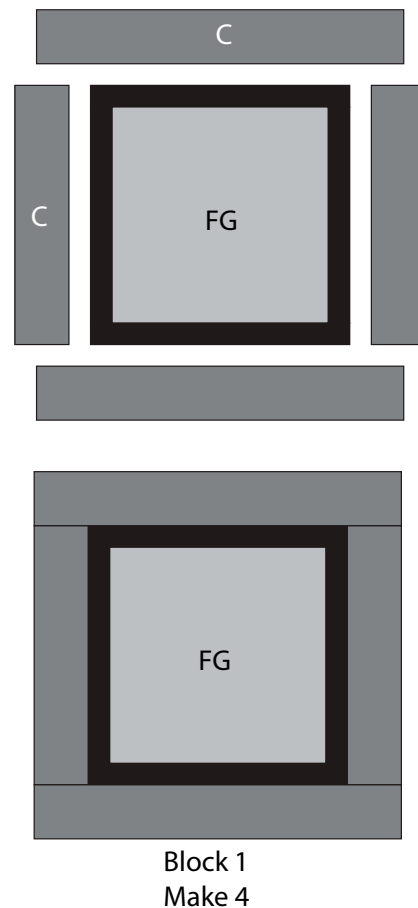
- All seam allowances are $\frac{1}{4}$ " (.64cm) unless otherwise noted.
- Sew pieces right sides together. Press seam allowances open unless otherwise indicated.

1. Sew $1\frac{1}{2}$ " x $10\frac{1}{2}$ " **Fabric G** rectangles to the left and right sides of (1) $10\frac{1}{2}$ " **Fabric F** square. Sew $1\frac{1}{2}$ " x $12\frac{1}{2}$ " **Fabric G** rectangles to the top and bottom to make (1) FG unit as shown in **Fig. 1**. Make (8). In the same way, use (1) $10\frac{1}{2}$ " **Fabric E** square and **Fabric G** rectangles to make (1) EG unit.
2. Sew 3 " x $12\frac{1}{2}$ " **Fabric C** rectangles to the left and right sides of (1) FG unit. Sew 3 " x $17\frac{1}{2}$ " **Fabric C** rectangles to the top and bottom to make (1) Block One as shown in **Fig. 2**. Make (4) Block One measuring $17\frac{1}{2}$ " square.

Fig. 1



Fig. 2



Block 1
Make 4

All possible care has been taken to ensure the accuracy of this pattern. We are not responsible for printing errors or the manner in which individual work varies.

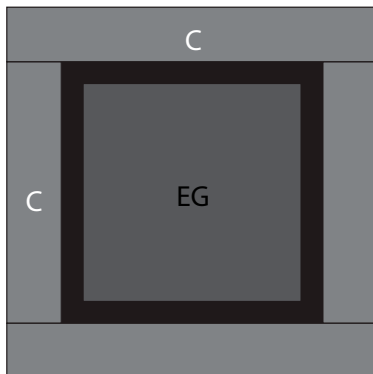
Please read the instructions carefully before starting this project. If kitting it is recommended a sample is made to confirm accuracy.

All free projects are intended to remain free and are not for resale.

To the Rescue Throw

- Sew 3" x 12½" **Fabric C** rectangles to the left and right sides of (1) EG unit. Sew 3" x 17½" **Fabric C** rectangles to the top and bottom to make (1) Block Two measuring 17½" square.

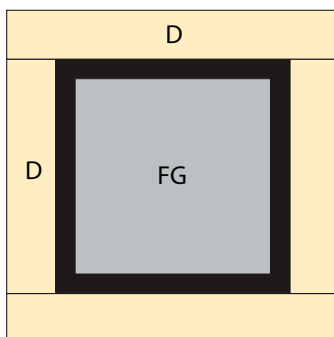
Fig. 3



Block 2
Make 1

- Sew 3" x 12½" **Fabric D** rectangles to left and right sides of (1) FG unit. Sew 3" x 17½" **Fabric D** rectangles to the top and bottom to make (1) Block Three. Make (4) Block Three measuring 17½" square.

Fig. 4



Block 3
Make 4

Quilt Top Assembly

Follow the Quilt Layout (page 6) while assembling the quilt top.

- Lay out blocks into (3) rows of (3) blocks each. Sew the blocks into rows and join the rows to complete the Quilt Center.
- Sew (1) 2½" x 51½" **Fabric B** strip to the left and right sides of the Quilt Center. Sew (1) 2½" x 55½" **Fabric B** strip to the top and bottom of the Quilt Center.
- Sew (1) 5½" x 55½" **Fabric A** strip to the left and right sides of the Quilt Center. Sew (1) 5½" x 65½" **Fabric A** strip to the top and bottom to complete the quilt top which measures 65½" x 65½".

Finishing

- Sew together the (7) 2½" x WOF **Fabric B** binding strips end to end using diagonal seams. Press the seams open. Press the binding strip in half wrong sides together.
- Trim the selvage edges from the backing fabric. Cut the yardage into two equal lengths and use a ½" seam to sew the sections together along one long edge to make the quilt backing. Press.
- Layer the backing (wrong side up), batting, and quilt top (right side up). Baste the layers together and quilt as desired. Trim excess batting and backing even with the quilt top.
- Leaving an 8" tail of binding and beginning along an edge of the quilt top, match raw edges of the binding to the raw edges of the quilt top. Sew the binding to the outside edge around all four sides and miter corners. Stop sewing approximately 12" from where you started and backstitch.

All possible care has been taken to ensure the accuracy of this pattern. We are not responsible for printing errors or the manner in which individual work varies.

Please read the instructions carefully before starting this project. If kitting it is recommended a sample is made to confirm accuracy.

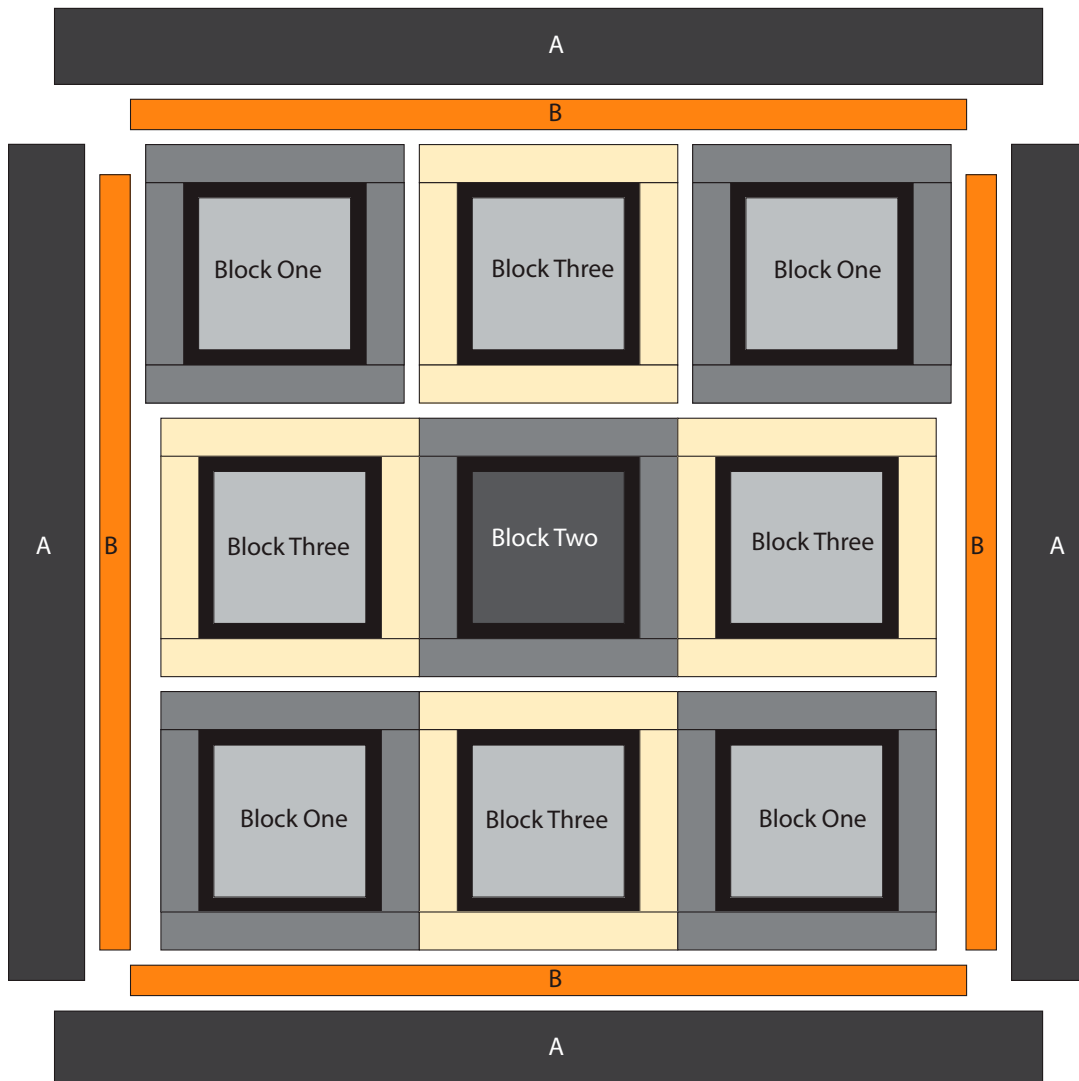
All free projects are intended to remain free and are not for resale.

To the Rescue Throw



12. Lay both loose ends of binding flat along the quilt edge. Where these two loose ends meet, fold them back onto themselves and press to form a crease. Using this crease as your stitching line, sew the two open ends of the binding together, right sides matching. Trim seam to $\frac{1}{4}$ " and press seam open. Finish sewing the binding to the quilt top.
13. Turn the binding over the raw edge to the back of the quilt and hand or machine stitch in place.

Quilt Layout



All possible care has been taken to ensure the accuracy of this pattern. We are not responsible for printing errors or the manner in which individual work varies.

Please read the instructions carefully before starting this project. If kitting it is recommended a sample is made to confirm accuracy.

All free projects are intended to remain free and are not for resale.