



Jewel Spot

by Chris Hill



Quilt size: 44" x 56" (1.12m x 1.42m)

Jewel Rosette Quilt

Designed by Chris Hill

www.checkerdist.com

Jewel Rosette Quilt Ordering Guide

SKU	Yards	Meters	6 Kits	12 Kits
 BA-1973	1/3 yard	0.31m	1 bolt	1 bolt
 BA-1975	1/3 yard	0.31m	1 bolt	1 bolt
 BA-1976	1/3 yard	0.31m	1 bolt	1 bolt
 BA-1977	1/3 yard	0.31m	1 bolt	1 bolt
 BA-1978	1/3 yard	0.31m	1 bolt	1 bolt
 BA-1979	1/3 yard	0.31m	1 bolt	1 bolt
 BA-1980	1/3 yard	0.31m	1 bolt	1 bolt
 BA-1981	1/3 yard	0.31m	1 bolt	1 bolt
 BA-1982	1/3 yard	0.31m	1 bolt	1 bolt
 BA-1983	1/3 yard	0.31m	1 bolt	1 bolt
 BA-1984	1/3 yard	0.31m	1 bolt	1 bolt
 BA-1985	1/3 yard	0.31m	1 bolt	1 bolt
 BA-1987	1/3 yard	0.31m	1 bolt	1 bolt
 BA-1988	1/3 yard	0.31m	1 bolt	1 bolt
 BA-1989	1/3 yard	0.31m	1 bolt	1 bolt
 BA-1990	1/3 yard	0.31m	1 bolt	1 bolt
 BA-1991	1/3 yard	0.31m	1 bolt	1 bolt
 BA-1992	1/3 yard	0.31m	1 bolt	1 bolt
 BA-1993*	1 1/2 yard	1.37m	1 bolt	2 bolts
 BA-1994	1/2 yard	0.46m	1 bolt	1 bolt

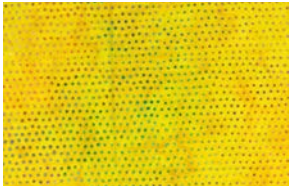
Backing Fabric Option

BA-1993	2 2/3 yards	2.44m	2 bolts	4 bolts
---------	-------------	-------	---------	---------

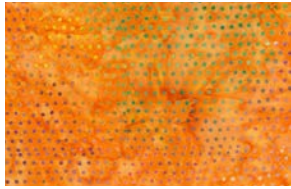
* Indicates binding fabric.

FQ = 18" x 22" (0.45m x 0.55m)

All fabric quantities are based on 15yd bolts unless otherwise indicated.



BA1973
Topaz



BA1975
Amber



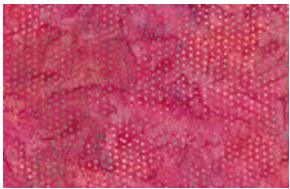
BA1976
Citrine



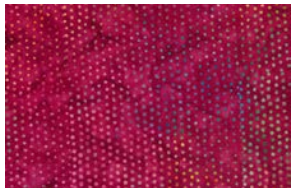
BA1977
Ruby



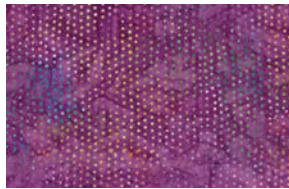
BA1978
Pink Diamond



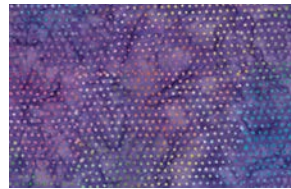
BA1979
Coral



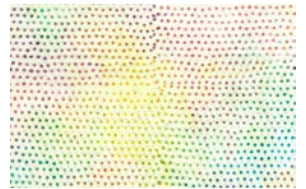
BA1980
Garnet



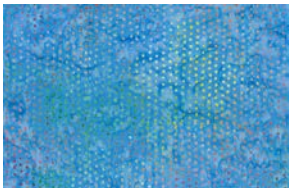
BA1981
Purple Garnet



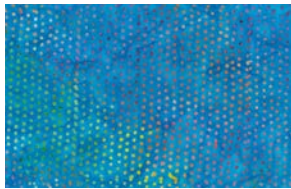
BA1982
Amethyst



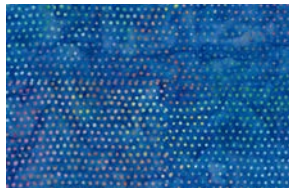
BA1994
Moonstone



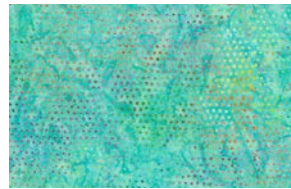
BA1983
Turquoise



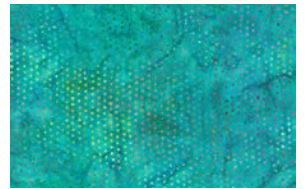
BA1984
Sapphire



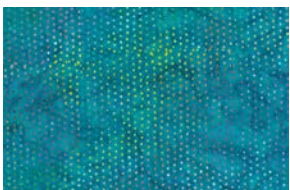
BA1985
Lapis



BA1988
Aquamarine



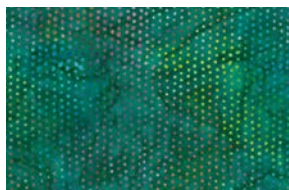
BA1989
Opal



BA1987
Blue Pearl



BA1991
Emerald



BA1992
Jade



BA1990
Tourmaline



BA1993
Onyx