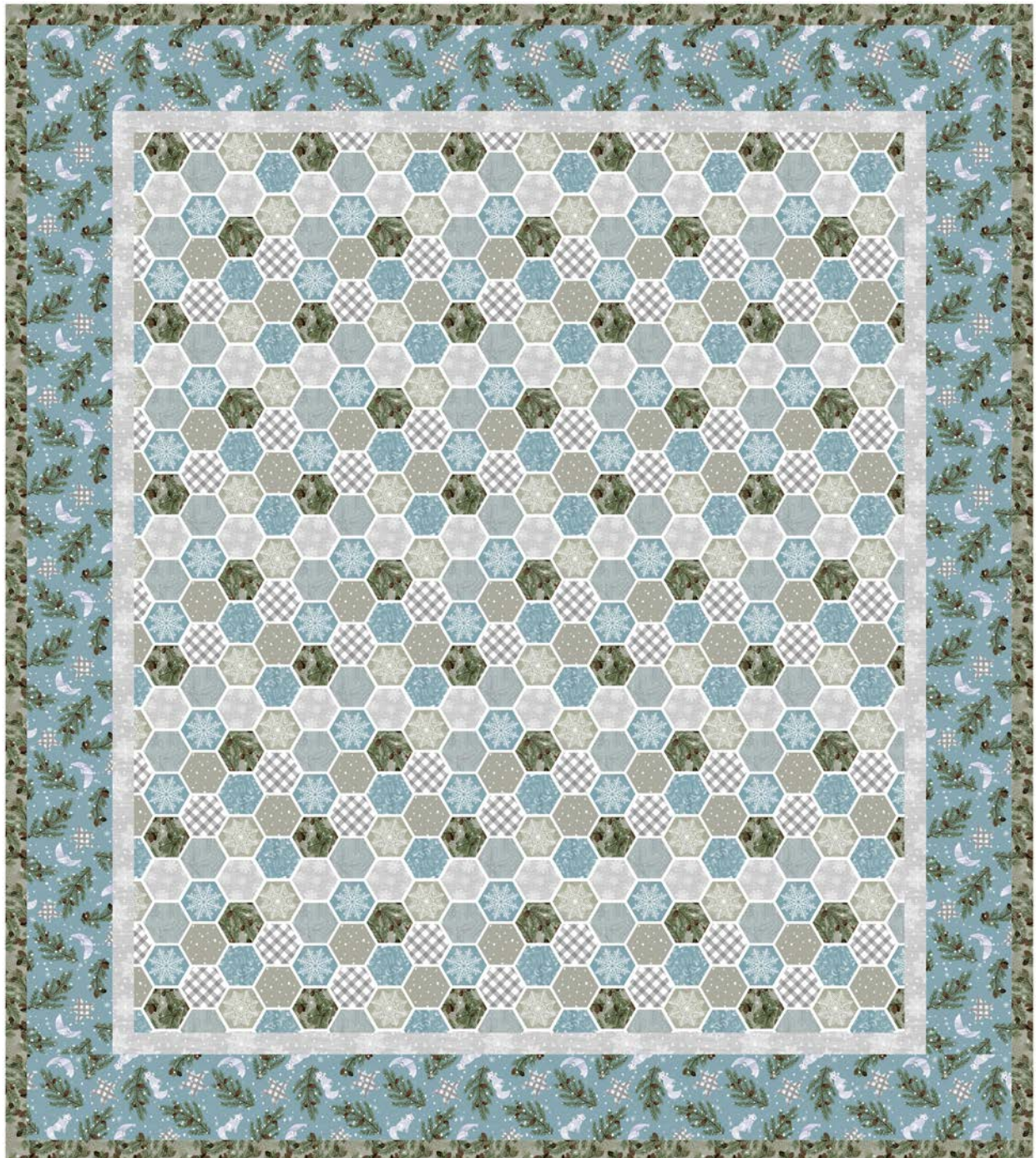




# Chill Factor

by Raquel Maciel







Quilt size: 48" x 54" (1.22m x 1.38m)

Skill Level: Beginner

**Hexagon Winter Dreams**  
Designed by Denise Russell of Pieced Brain  
[www.blankquilting.net](http://www.blankquilting.net)

## Hexagon Winter Dreams Ordering Guide

SKU	Yards	Meters	6 Kits	12 Kits
 4238F-67	7/8 yds	0.80m	1 bolt	1 bolt
 4240F-92	1/4 yds	0.23m	1 bolt	1 bolt
 4241F-60*	7/8 yds	0.80m	1 bolt	1 bolt
 4244F-90	1 1/2 yds	1.37m	1 bolt	2 bolts

### Backing Fabric Option

4243F-63	3 1/4 yds	2.97m	2 bolts	3 bolts
----------	-----------	-------	---------	---------

\* Indicates binding fabric.

FQ = 18" x 22" (0.45m x 0.55m)

All fabric quantities are based on 15yd bolts unless otherwise indicated.



4238F-67  
Foxes, owls & pine branches  
Aqua



4240F-92  
Snowflakes  
Lt. Gray



4241F-60\*  
Pine Branches  
Lt. Olive



4244F-90  
Hexagons  
Gray