

Fall Friends Quilt



Finished Quilt Size: **45" x 57" (1.14m x 1.45m)**
Collection: **Cheerful Cheeks by Lena Anisimova**
Technique: **Pieced**
Design by: **Lisa Swenson Ruble**
Skill Level: **Advanced Beginner**
Tech Edited by: **Quilt Pattern Writers**

Fall Friends Quilt



Fabric Requirements

DESIGN	COLOR	ITEM ID	YARDAGE
(A) Trees	Rust	3480-35*	1 yard (0.91m)
(B) Berries	Ecru	3481-44	½ yard (0.46m)
(C) Leaves	Willow Grey	3482-93	⅞ yard (0.80m)
(D) Tossed Raccoons	Light Taupe	3483-45	¼ yard (0.23m)
(E) Tossed Critters	White	3489-01	½ yard (0.46m)
(F) Panel - 24 inches	Willow Grey	3491P-93	⅔ yard (0.61m)
(G) Stof Melange Basic	Lt Brown	4509-302	⅓ yard (0.30m)

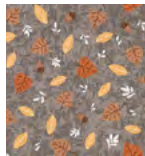
* includes binding



(A)



(B)



(C)



(D)



(E)



(F)



(G)

Backing (Purchased Separately)

44" (1.12m) wide

Mushrooms

Willow Grey

3488-93

3½ yards (3.20m)

OR

108" (2.74m) wide

1⅞ yards (1.71m)



Backing
44"

Additional Materials:

- 100% Cotton Thread in colors to match
- Batting 53" x 65" (1.35m x 16.51m)

All possible care has been taken to ensure the accuracy of this pattern. We are not responsible for printing errors or the manner in which individual work varies.

Please read the instructions carefully before starting this project. If kitting it is recommended a sample is made to confirm accuracy.

All free projects are intended to remain free and are not for resale.

Fall Friends Quilt



Cutting Instructions

Notes:

- Please make sure to check blankquilting.net for pattern updates prior to starting the project.
- All strips are cut across the width of fabric (WOF) from selvage to selvage edge unless otherwise noted.

From Fabric A, cut:

- (6) 2½" x WOF for binding
- (2) 2¼" x WOF; subcut
 - (2) 2¼" x 26½"
- (3) 2" x WOF; subcut
 - (2) 2" x 43"

From Fabric B, cut:

- (6) 2" x WOF

From Fabric C, cut:

- (3) 3½" x WOF
- (6) 2" x WOF

From Fabric D, cut:

- (1) 5" x WOF; subcut
 - (4) 5" squares

From Fabric E, cut:

- (3) 4½" x WOF

From Fabric F, cut:

Fussy-cut (1) 23½" x 43" panel, centering design

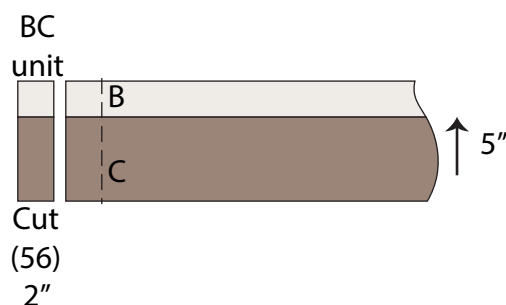
From Fabric G, cut:

- (3) 1½" x WOF
- (2) 1½" x WOF; subcut
 - (2) 1½" x 36½"

Sewing

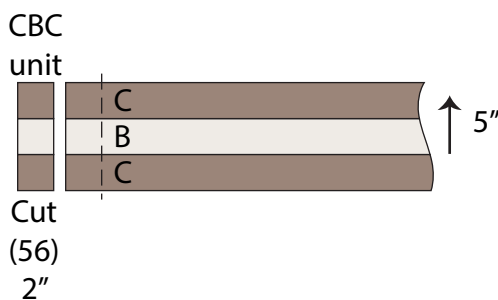
1. Sew (1) 2" x WOF **Fabric B** strip lengthwise to (1) 3½" x WOF **Fabric C** strip. Make (3) strip sets measuring 5" x WOF. From the strip sets, crosscut a total of (56) 2" x 5" BC segments (**Fig. 1**). Set aside.

Fig. 1



2. Sew 2" x WOF **Fabric C** strips lengthwise to opposite sides of (1) 2" x WOF **Fabric B** strip. Make (3) strip sets measuring 5" x WOF. From the strip sets, crosscut a total of (56) 2" x 5" CBC segments (**Fig. 2**) Set aside.

Fig. 2



All possible care has been taken to ensure the accuracy of this pattern. We are not responsible for printing errors or the manner in which individual work varies.

Please read the instructions carefully before starting this project. If kitting it is recommended a sample is made to confirm accuracy.

All free projects are intended to remain free and are not for resale.

Quilt Top Assembly

Follow the Quilt Layout Diagram (page 5) while assembling the quilt top.

3. Sew (3) 2" x WOF **Fabric A** strips together end to end into a continuous strip and press open. Cut (2) 43" lengths. Sew 2" x 43" **Fabric A** strips to opposite sides of the 23½" x 43" **Fabric F** panel. Sew 2¼" x 26½" **Fabric A** strips to the top/bottom. Bordered panel should measure 26½" x 46½".
4. Sew (3) 4 ½" x WOF **Fabric E** strips together end to end into a continuous strip and press open. Cut (2) 46½" lengths. Sew 4½" x 46½" **Fabric E** strips to opposite sides of the bordered panel from Step 3.
5. Sew (3) 1½" x WOF **Fabric G** strips together end to end into a continuous strip and press open. Cut (2) 46½" lengths. Sew 1½" x 46½" **Fabric G** strips to opposite sides of the unit from Step 4. Sew 1½" x 36½" **Fabric G** strips to the top/bottom. Quilt center will measure 36½" x 48½".
6. Referring to the Quilt Layout Diagram, sew together (16) each BC and CBC segments to make a pieced side border measuring 5" x 48½". Make (2) total. Sew to opposite sides of the quilt center from Step 5.
7. Sew together (12) each BC and CBC segments to make pieced top/bottom borders. Noting orientation, sew 5" **Fabric D** squares to both ends of each border. Border will measure 5" x 45½". Sew to the top/bottom of the quilt center. Quilt top measures 45½" x 57½" unfinished.

Finishing

8. Sew together the (6) 2½" x WOF **Fabric A** binding strips end to end using diagonal seams. Press the seams open. Press the binding strip in half wrong sides together.
9. Layer the backing (wrong side up), batting, and quilt top (right side up). Baste the layers together and quilt as desired. Trim excess batting and backing even with the top of the quilt.
10. Leaving an 8" tail of binding and beginning along an edge of the quilt top, match raw edges of the binding to the raw edges of the quilt top. Sew the binding to the outside edge around all four sides and miter corners. Stop sewing approximately 12" from where you started and backstitch.
11. Lay both loose ends of binding flat along the quilt edge. Where these two loose ends meet, fold them back onto themselves and press to form a crease. Using this crease as your stitching line, sew the two open ends of the binding together, right sides matching. Trim seam to ¼" and press seam open. Finish sewing the binding to the quilt top.
12. Turn the binding over the raw edge to the back of the quilt and hand or machine stitch in place.

All possible care has been taken to ensure the accuracy of this pattern. We are not responsible for printing errors or the manner in which individual work varies.

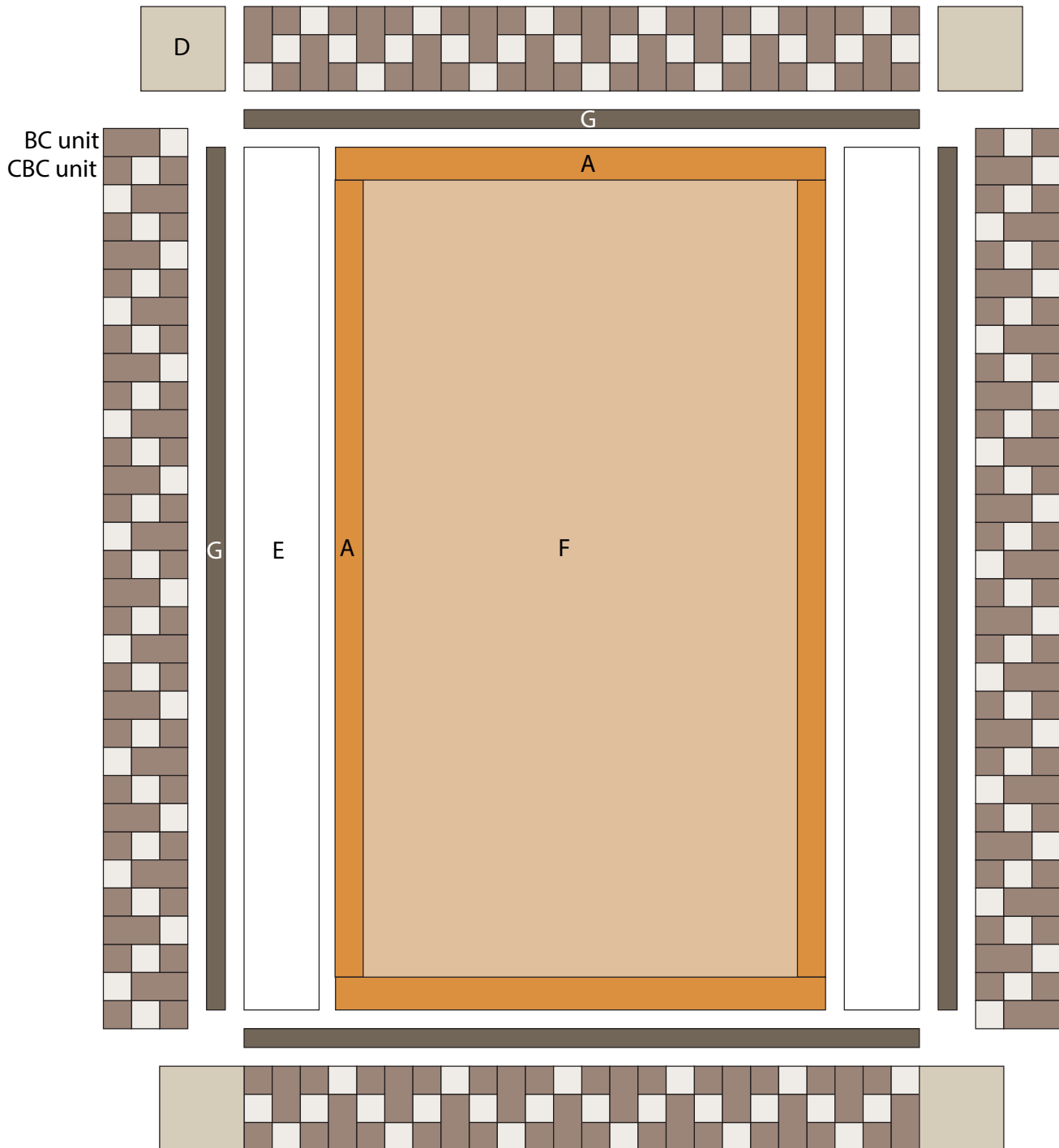
Please read the instructions carefully before starting this project. If kitting it is recommended a sample is made to confirm accuracy.

All free projects are intended to remain free and are not for resale.

Fall Friends Quilt



Quilt Layout



*All possible care has been taken to ensure the accuracy of this pattern. We are not responsible for printing errors or the manner in which individual work varies.
Please read the instructions carefully before starting this project. If kitting it is recommended a sample is made to confirm accuracy.
All free projects are intended to remain free and are not for resale.*