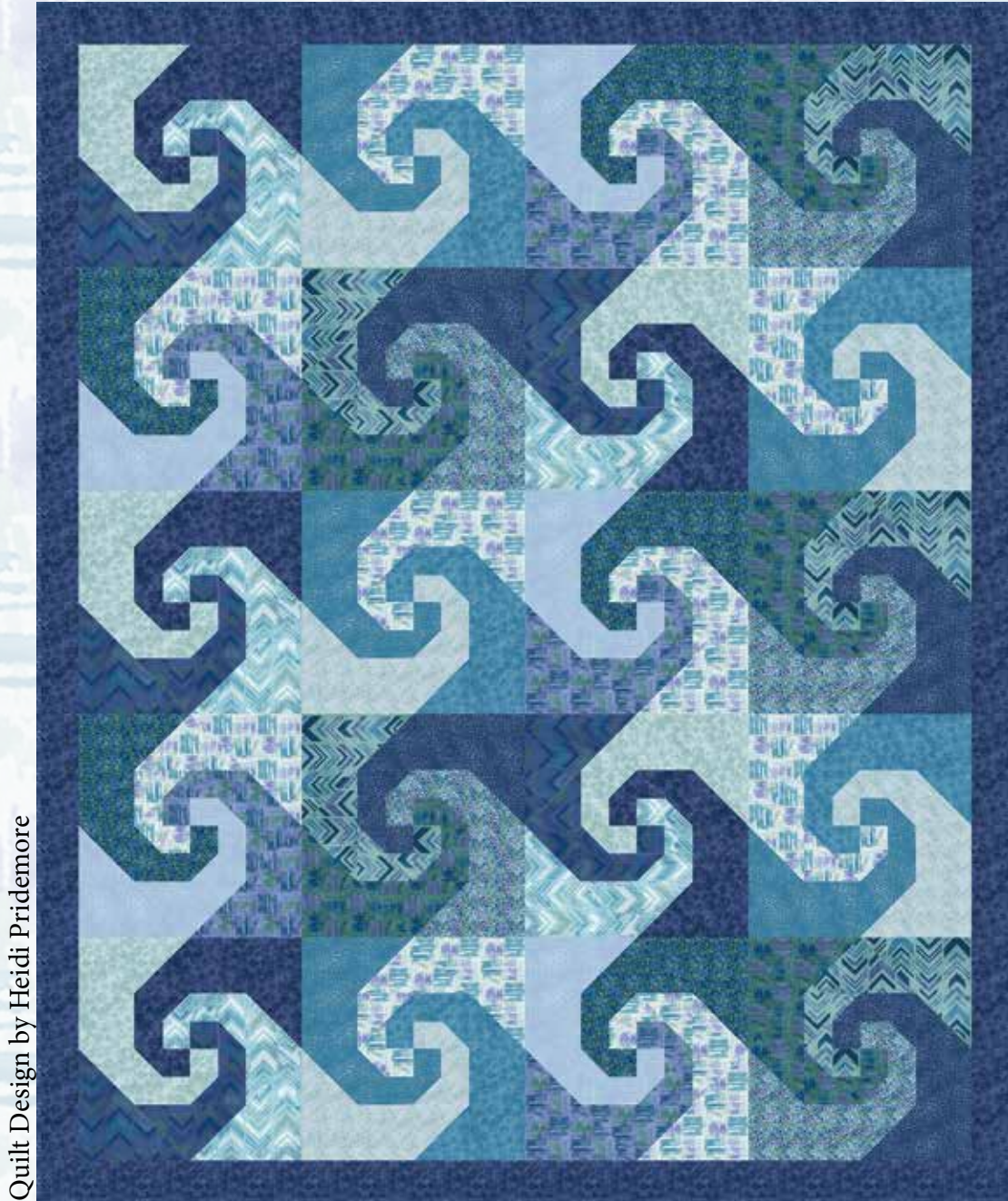


Tessellations

A Free Project Sheet
NOT FOR RESALE

Quilt 1



Quilt Design by Heidi Pridemore

Skill Level: Intermediate

facebook



Finished Quilt Size: 52" x 64"
49 West 37th Street, 14th floor, New York, NY 10018
Toll Free: 800-294-9495
fax: 212-679-4578
www.blankquilting.net

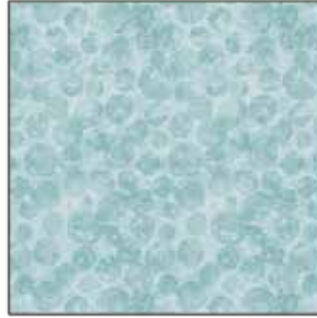
TESSELLATIONS Quilt 1

Finished Quilt Size: 52" x 64"

Fabrics in the Tesselations Collection



Medallions - Aqua
9404-16



Dot Texture - Light Blue
9405-11



Dot Texture - Purple
9405-55



Dot Texture - Medium Blue
9405-70



Raindrop Texture - Light Purple
9406-50



Raindrop Texture
Medium Blue - 9406-70



Raindrop Texture - Navy
9406-77



Multi Abstract Dot - Light Blue
9407-11



Multi Abstract Dot - Aqua
9407-16



Multi Abstract Dot - Navy
9407-77



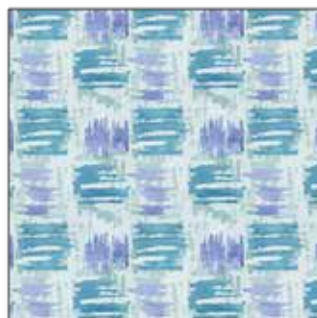
Broken Chevron - Light Blue
9408-11



Broken Chevron - Aqua
9408-16



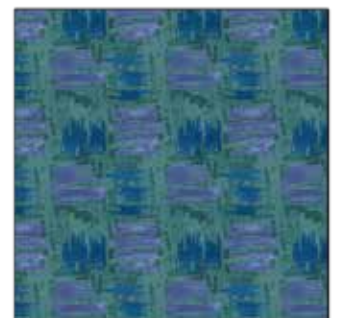
Broken Chevron - Purple
9408-55



Abstract Squares - Aqua
9409-16



Abstract Squares
Medium Purple - 9409-50



Abstract Squares - Dark Teal
9409-66

Materials

½ yard	Dot Texture - Light Blue (A)	9405-11
1 ½ yards	Dot Texture - Purple (B)	9405-55*
½ yard	Broken Chevron - Light Blue (C)	9408-11
½ yard	Broken Chevron - Purple (D)	9408-55
½ yard	Raindrop Texture - Medium Blue (E)	9406-70
⅔ yard	Abstract Squares - Aqua (F)	9409-16
½ yard	Dot Texture - Medium Blue (G)	9405-70
½ yard	Multi Abstract Dot - Light Blue (H)	9407-11
½ yard	Raindrop Texture - Light Purple (I)	9406-50
½ yard	Multi Abstract Dot - Navy (J)	9407-77
½ yard	Abstract Squares - Medium Purple (K)	9409-50
½ yard	Abstract Squares - Dark Teal (L)	9409-66
½ yard	Broken Chevron - Aqua (M)	9408-16
½ yard	Raindrop Texture - Navy (N)	9406-77
½ yard	Multi Abstract Dot - Aqua (O)	9407-16
3 ½ yards	Medallions - Aqua (Backing)	9404-16

* Includes binding

Cutting Instructions

Please note: all strips are cut across the width of fabric (WOF) from selvage to selvage edge unless otherwise noted.

Note: Except for Fabric F, you will be making (6) of each triangle below, but only (5) triangles of each size will be used.

From the Dot Texture - Light Blue (A), cut:

- (1) 6 7/8" x WOF strip. Sub-cut (3) 6 7/8" squares and (3) 5 1/8" squares. Cut both size squares across one diagonal to make (6) 6 7/8" triangles and (6) 5 1/8" triangles.
- (1) 3 7/8" x WOF strip. Sub-cut (3) 3 7/8" squares and (3) 3" squares. Cut both size squares across one diagonal to make (6) 3 7/8" triangles and (6) 3" triangles.
- (1) 2" x WOF strip. Sub-cut (5) 2" squares.

From the Dot Texture - Purple (B), cut:

- (1) 6 7/8" x WOF strip. Sub-cut (3) 6 7/8" squares and (3) 5 1/8" squares. Cut both size squares across one diagonal to make (6) 6 7/8" triangles and (6) 5 1/8" triangles.
- (1) 3 7/8" x WOF strip. Sub-cut (3) 3 7/8" squares and (3) 3" squares. Cut both size squares across one diagonal to make (6) 3 7/8" triangles and (6) 3" triangles.
- (1) 2" x WOF strip. Sub-cut (5) 2" squares.
- (4) 2 1/2" x WOF strips. Sew the strips together end to end with diagonal seams and cut (2) 2 1/2" x 60 1/2" strips.
- (3) 2 1/2" x WOF strips. Sew the strips together end to end with diagonal seams and cut (2) 2 1/2" x 52 1/2" strips.
- (6) 2 1/2" x WOF strips for the binding

From the Broken Chevron - Light Blue (C), cut:

- (1) 6 7/8" x WOF strip. Sub-cut (3) 6 7/8" squares and (3) 5 1/8" squares. Cut both size squares across one diagonal to make (6) 6 7/8" triangles and (6) 5 1/8" triangles.
- (1) 3 7/8" x WOF strip. Sub-cut (3) 3 7/8" squares and (3) 3" squares. Cut both size squares across one diagonal to make (6) 3 7/8" triangles and (6) 3" triangles.
- (1) 2" x WOF strip. Sub-cut (5) 2" squares.

From the Broken Chevron - Purple (D), cut:

- (1) 6 7/8" x WOF strip. Sub-cut (3) 6 7/8" squares and (3) 5 1/8" squares. Cut both size squares across one diagonal to make (6) 6 7/8" triangles and (6) 5 1/8" triangles.
- (1) 3 7/8" x WOF strip. Sub-cut (3) 3 7/8" squares and (3) 3" squares. Cut both size squares across one diagonal to make (6) 3 7/8" triangles and (6) 3" triangles.
- (1) 2" x WOF strip. Sub-cut (5) 2" squares.

From the Raindrop Texture - Medium Blue (E), cut:

- (1) 6 7/8" x WOF strip. Sub-cut (3) 6 7/8" squares and (3) 5 1/8" squares. Cut both size squares across one diagonal to make (6) 6 7/8" triangles and (6) 5 1/8" triangles.
- (1) 3 7/8" x WOF strip. Sub-cut (3) 3 7/8" squares and (3) 3" squares. Cut both size squares across one diagonal to make (6) 3 7/8" triangles and (6) 3" triangles.
- (1) 2" x WOF strip. Sub-cut (5) 2" squares.

From the Abstract Squares - Aqua (F), cut:

- (1) 6 7/8" x WOF strip. Sub-cut (5) 6 7/8" squares. Cut each square across one diagonal to make (10) 6 7/8" triangles.
- (1) 5 1/8" x WOF strip. Sub-cut (5) 5 1/8" squares. Cut each square across one diagonal to make (10) 5 1/8" triangles.
- (1) 3 7/8" x WOF strip. Sub-cut (5) 3 7/8" squares and (5) 3" squares. Cut both size squares across one diagonal to make (10) 3 7/8" triangles and (10) 3" triangles..
- (1) 2" x WOF strip. Sub-cut (10) 2" squares.

From the Dot Texture - Medium Blue (G), cut:

- (1) 6 7/8" x WOF strip. Sub-cut (3) 6 7/8" squares and (3) 5 1/8" squares. Cut both size squares across one diagonal to make (6) 6 7/8" triangles and (6) 5 1/8" triangles.
- (1) 3 7/8" x WOF strip. Sub-cut (3) 3 7/8" squares and (3) 3" squares. Cut both size squares across one diagonal to make (6) 3 7/8" triangles and (6) 3" triangles.
- (1) 2" x WOF strip. Sub-cut (5) 2" squares.

From the Multi Abstract Dot- Light Blue (H), cut:

- (1) 6 7/8" x WOF strip. Sub-cut (3) 6 7/8" squares and (3) 5 1/8" squares. Cut both size squares across one diagonal to make (6) 6 7/8" triangles and (6) 5 1/8" triangles.
- (1) 3 7/8" x WOF strip. Sub-cut (3) 3 7/8" squares and (3) 3" squares. Cut both size squares across one diagonal to make (6) 3 7/8" triangles and (6) 3" triangles.
- (1) 2" x WOF strip. Sub-cut (5) 2" squares.

From the Raindrop Texture - Light Purple (I), cut:

- (1) 6 7/8" x WOF strip. Sub-cut (3) 6 7/8" squares and (3) 5 1/8" squares. Cut both size squares across one diagonal to make (6) 6 7/8" triangles and (6) 5 1/8" triangles.
- (1) 3 7/8" x WOF strip. Sub-cut (3) 3 7/8" squares and (3) 3" squares. Cut both size squares across one diagonal to make (6) 3 7/8" triangles and (6) 3" triangles.
- (1) 2" x WOF strip. Sub-cut (5) 2" squares.

Cutting Instructions - Continued

Please note: all strips are cut across the width of fabric (WOF) from selvage to selvage edge unless otherwise noted.

From the Multi Abstract Dot - Navy (J), cut:

- (1) 6 7/8" x WOF strip. Sub-cut (3) 6 7/8" squares and (3) 5 1/8" squares. Cut both size squares across one diagonal to make (6) 6 7/8" triangles and (6) 5 1/8" triangles.
- (1) 3 7/8" x WOF strip. Sub-cut (3) 3 7/8" squares and (3) 3" squares. Cut both size squares across one diagonal to make (6) 3 7/8" triangles and (6) 3" triangles.
- (1) 2" x WOF strip. Sub-cut (5) 2" squares.

From the Abstract Squares - Medium Purple (K), cut:

- (1) 6 7/8" x WOF strip. Sub-cut (3) 6 7/8" squares and (3) 5 1/8" squares. Cut both size squares across one diagonal to make (6) 6 7/8" triangles and (6) 5 1/8" triangles.
- (1) 3 7/8" x WOF strip. Sub-cut (3) 3 7/8" squares and (3) 3" squares. Cut both size squares across one diagonal to make (6) 3 7/8" triangles and (6) 3" triangles.
- (1) 2" x WOF strip. Sub-cut (5) 2" squares.

From the Abstract Squares - Dark Teal (L), cut:

- (1) 6 7/8" x WOF strip. Sub-cut (3) 6 7/8" squares and (3) 5 1/8" squares. Cut both size squares across one diagonal to make (6) 6 7/8" triangles and (6) 5 1/8" triangles.
- (1) 3 7/8" x WOF strip. Sub-cut (3) 3 7/8" squares and (3) 3" squares. Cut both size squares across one diagonal to make (6) 3 7/8" triangles and (6) 3" triangles.
- (1) 2" x WOF strip. Sub-cut (5) 2" squares.

From the Broken Chevron - Aqua (M), cut:

- (1) 6 7/8" x WOF strip. Sub-cut (3) 6 7/8" squares and (3) 5 1/8" squares. Cut both size squares across one diagonal to make (6) 6 7/8" triangles and (6) 5 1/8" triangles.
- (1) 3 7/8" x WOF strip. Sub-cut (3) 3 7/8" squares and (3) 3" squares. Cut both size squares across one diagonal to make (6) 3 7/8" triangles and (6) 3" triangles.
- (1) 2" x WOF strip. Sub-cut (5) 2" squares.

From the Raindrop Texture - Navy (N), cut:

- (1) 6 7/8" x WOF strip. Sub-cut (3) 6 7/8" squares and (3) 5 1/8" squares. Cut both size squares across one diagonal to make (6) 6 7/8" triangles and (6) 5 1/8" triangles.
- (1) 3 7/8" x WOF strip. Sub-cut (3) 3 7/8" squares and (3) 3" squares. Cut both size squares across one diagonal to make (6) 3 7/8" triangles and (6) 3" triangles.
- (1) 2" x WOF strip. Sub-cut (5) 2" squares.

From the Multi Abstract Dot - Aqua (O), cut:

- (1) 6 7/8" x WOF strip. Sub-cut (3) 6 7/8" squares and (3) 5 1/8" squares. Cut both size squares across one diagonal to make (6) 6 7/8" triangles and (6) 5 1/8" triangles.
- (1) 3 7/8" x WOF strip. Sub-cut (3) 3 7/8" squares and (3) 3" squares. Cut both size squares across one diagonal to make (6) 3 7/8" triangles and (6) 3" triangles.
- (1) 2" x WOF strip. Sub-cut (5) 2" squares.

From the Medallions - Aqua (Backing), cut:

- (2) 60" x WOF strips for the backing. Sew the strips together and trim to make the 60" x 72" back.

Sewing Instructions

1. Sew (1) 2" Fabric C square to the left side of (1) 2" Fabric D square to make the top row. Sew (1) 2" Fabric B square to the left side of (1) 2" Fabric A square to make the bottom row. Sew the two rows together to make (1) Unit 1 (Fig. 1). Repeat to make (5) Unit 1 blocks total.

Unit 1
make 5

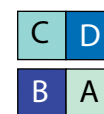


Fig. 1

2. Sew (1) 3" Fabric B triangle to the left side of the Unit 1 block. Sew (1) 3" Fabric D triangle to the right side of the Unit 1 block. Sew (1) 3" Fabric C triangle to the top of the Unit 1 block. Sew (1) 3" Fabric A triangle to the bottom of the Unit 1 block to make (1) Unit 2 block (Fig. 2). Repeat to make (5) Unit 2 blocks total.

Unit 2
make 5

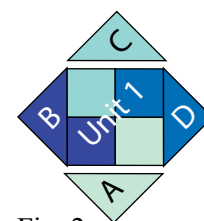


Fig. 2

3. Sew (1) 3 7/8" Fabric B triangle to the upper left corner of the Unit 2 block. Sew (1) 3 7/8" Fabric D triangle to the lower right corner of the Unit 2 block. Sew (1) 3 7/8" Fabric C triangle to the upper right corner of the Unit 2 block. Sew (1) 3 7/8" Fabric A triangle to the bottom left corner of the Unit 2 block to make (1) Unit 3 block (Fig. 3). Repeat to make (5) Unit 3 blocks total.

4. Sew (1) 5 1/8" Fabric A triangle to the left side of the Unit 3 block. Sew (1) 5 1/8" Fabric C triangle to the right side of the Unit 3 block. Sew (1) 5 1/8" Fabric B triangle to the top of the Unit 3 block. Sew (1) 5 1/8" Fabric D triangle to the bottom of the Unit 3 block to make (1) Unit 4 block (Fig. 4). Repeat to make (5) Unit 4 blocks total.

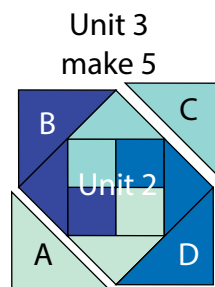


Fig. 3

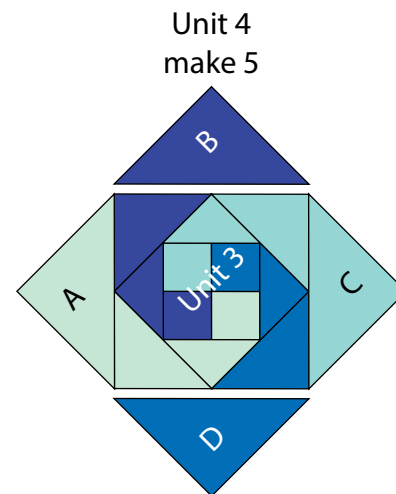


Fig. 4

5. Sew (1) $6 \frac{7}{8}$ " Fabric A triangle to the upper left corner of the Unit 4 block. Sew (1) $6 \frac{7}{8}$ " Fabric C triangle to the lower right corner of the Unit 4 block. Sew (1) $6 \frac{7}{8}$ " Fabric B triangle to the upper right corner of the Unit 4 block. Sew (1) $6 \frac{7}{8}$ " Fabric D triangle to the bottom left corner of the Unit 4 block to make (1) Block One square (Fig. 5). Repeat to make (5) Block One squares total.

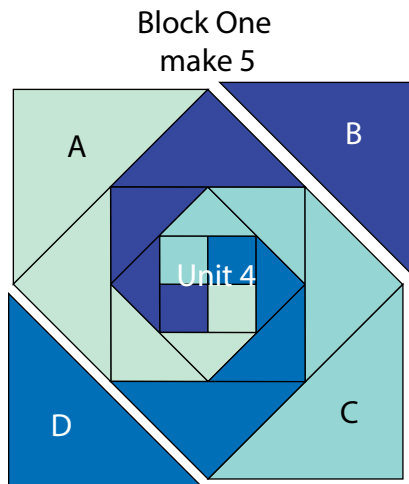


Fig. 5

6. Repeat Steps 1-5 and refer to Figure 6 for fabric placement to make (5) Block Two squares.

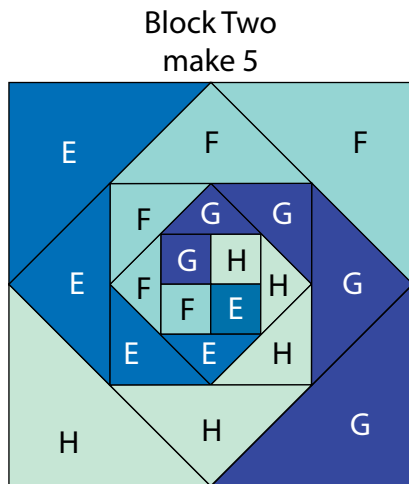


Fig. 6

7. Repeat Steps 1-5 and refer to Figure 7 for fabric placement to make (5) Block Three squares.

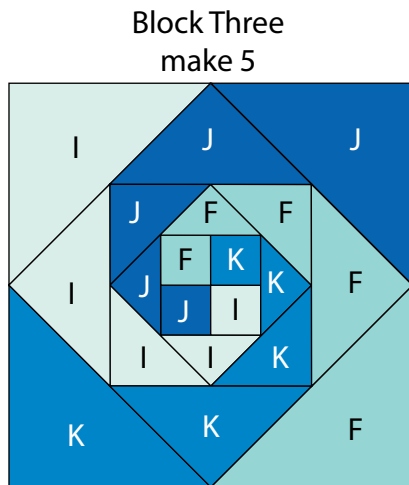


Fig. 7

8. Repeat Steps 1-5 and refer to Figure 8 for fabric placement to make (5) Block Four squares.

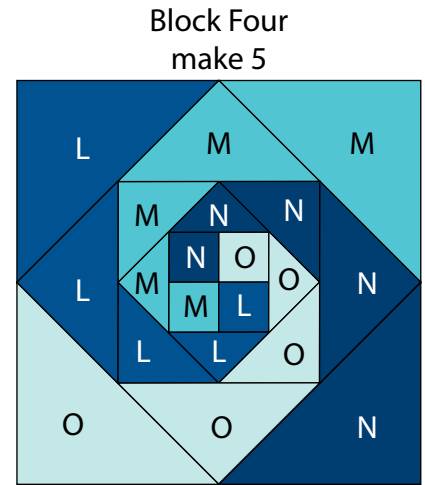


Fig. 8

Quilt Top Assembly

(Refer to Quilt Layout while assembling.)

9. Sew together (1) Block One square, (1) Block Two square, (1) Block Three square and (1) Block Four square to make Row One. Repeat to make Row Three and Five.

10. Sew together (1) Block Three square, (1) Block Four square, (1) Block One square and (1) Block Two square to make Row Two. Repeat to make Row Four.

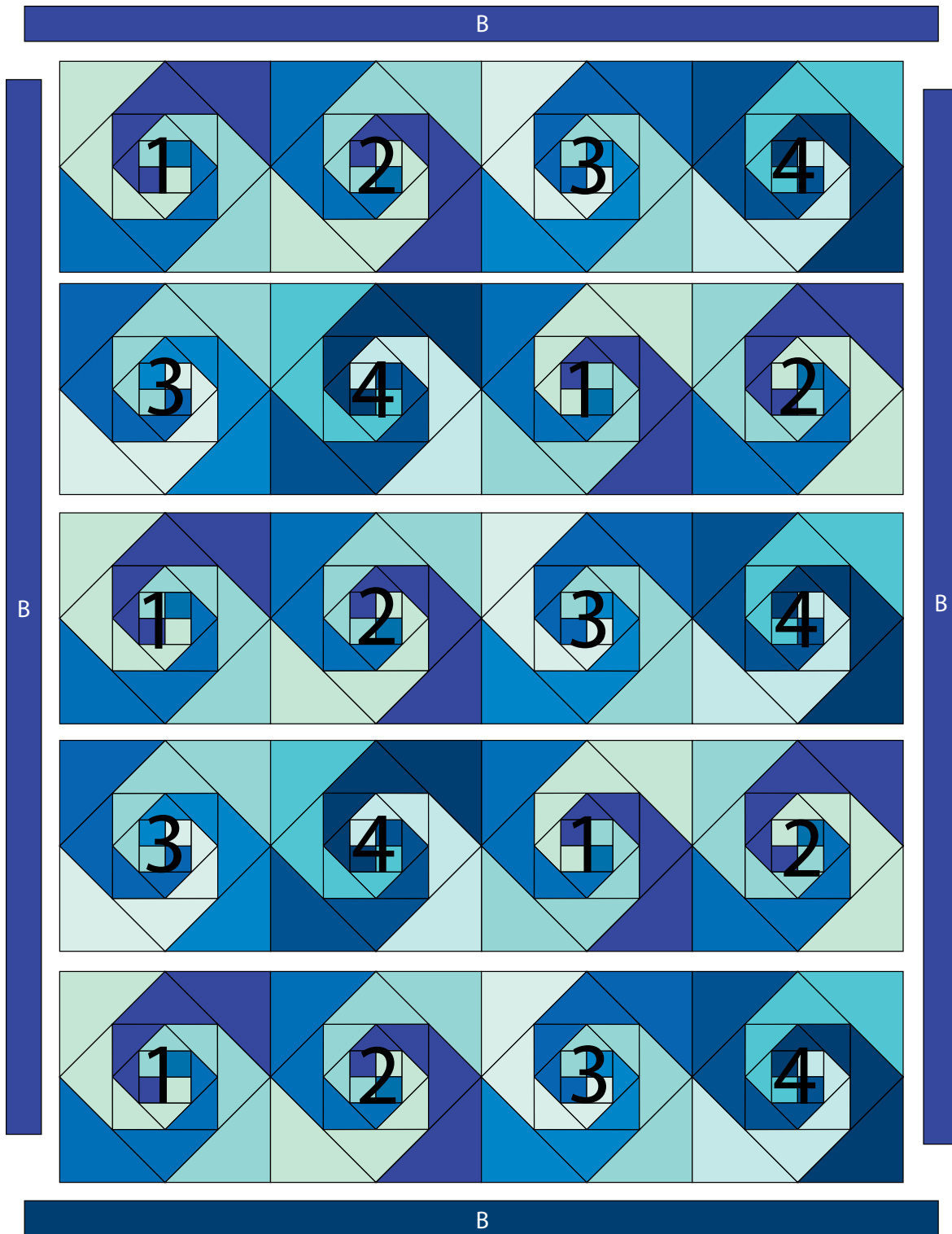
11. Sew the rows together in numerical order to make the quilt top.

12. Sew (1) $2 \frac{1}{2}$ " x $60 \frac{1}{2}$ " Fabric B strip to each side of the quilt top. Sew one $2 \frac{1}{2}$ " x $52 \frac{1}{2}$ " Fabric B strip to the top and bottom of the quilt top.

13. Layer and quilt as desired.

14. Sew the (6) $2 \frac{1}{2}$ " x WOF Fabric B strips together, end to end with 45-degree seams, to make the binding. Fold this long strip in half lengthwise with wrong sides together and press.

15. Bind as desired.



Quilt Layout

Every effort has been made to ensure that all projects are error free. All the information is presented in good faith, however no warranty can be given nor results guaranteed as we have no control over the execution of instructions. Therefore, we assume no responsibility for the use of this information or damages that may occur as a result. When errors are brought to our attention, we make every effort to correct and post a revision as soon as possible. Please make sure to check www.blankquilting.net for pattern updates prior to starting the project. We also recommend that you test the project prior to cutting for kits. Finally, all free projects are intended to remain free to you and are **not for resale**.